

Data Sheet

LOXL4 (*E. coli*-derived)

Human, Recombinant, C-terminal His-tag

Catalog #: 60524

Lot #: 111007

Conc.: 0.33 mg/ml

Formulated in: 9 mM Na₂HPO₄/KH₂ PO₄
pH 7.4, 124 mM KCl, 2.4 mM KCl and
10% glycerol

Stability: At least 6 months at –80°C.
*Avoid freeze/thaw cycles. Storing diluted
enzyme is not recommended, if
necessary, use carrier protein (BSA 0.1
– 0.5%).*

References:

1. Gorogh, T., *et al.*, *Int. J. Oncol.* 2008;
33(5): 1091-1098.
2. Kim, D.J., *et al.*, *Biochem. Biophys.
Res. Commun.* 2008; **4:** 521-527.

Description: Human Lysyl oxidase homolog 4 (LOXL4), also known as Lysyl oxidase-related protein C (LOXC). GenBank Accession No. NM_032211, a.a. 570-756(end) with a C-terminal His-tag expressed in an *E. coli* expression system.

Application: Useful for the study of enzyme kinetics, screening inhibitors, and selectivity profiling.

Quality Assurance

6-20% SDS-PAGE Coomassie staining

Lane 1:

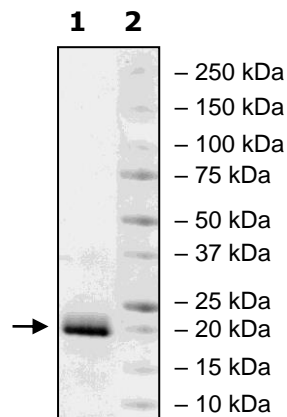
2 µg LOXL4

Lane 2:

Protein Marker

Purity: ≥90%

MW: 23 kDa



OUR PRODUCTS ARE FOR RESEARCH USE ONLY. NOT FOR DIAGNOSTIC OR THERAPEUTIC USE.

To place your order, please contact us by Phone **1.858.829.3082** Fax **1.858.481.8694**

Or you can Email us at: info@bpsbioscience.com

Please visit our website at: www.bpsbioscience.com