

## Data Sheet

### PLA2G4A

Human, recombinant, C-terminal Flag-His tag  
**Catalog #:** 60094  
**Lot #:** 130425-HF      **Conc.:** 0.1 mg/ml

**Formulated in:** 40 mM Tris-HCl, pH 8.0,  
 110 mM NaCl, 2.2 mM KCl, 80ug/ml Flag  
 peptide, and 20% glycerol.

**Stability:** >6 months at -80°C

**References:**

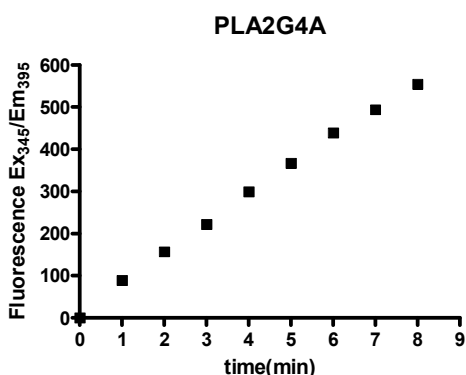
1. Chalimoniuk M. *Postepy Biochem.* 2012; **58(2)**:204-8.
2. Nadalin S, Giacometti J, *et al.*, *Prostaglandins Leukot Essent Fatty Acids.* 2013; **88(2)**:185-90.

**Description:** Human PLA2G4A, GenBank Accession No. NM\_024420, a.a. 1-749 (end), with C-terminal Flag-His tag, MW=87 kDa, expressed in a baculovirus expression system.

**Specific Activity:** 57 pmol/min/μg.  
**Assay Conditions:** PLA reaction was done using the 1-Hexadecanoyl-2-(1-prenedecanoyl)-sn-Glycerol-3-phosphocholine substrate. Enzyme reaction is conducted in 100 μl volume containing 50 mM Tris pH 8.0, 500 mM NaCl, 10 mM CaCl<sub>2</sub>, 0.5 mg/ml BSA, 10 μM substrate and 200 ng PLA2G4A. Reaction progress was monitored at ex<sub>345</sub>/em<sub>395</sub> for 10 minutes continuously at room temperature.

**Application:** Useful for the study of enzyme kinetics, screening inhibitors, and selectivity profiling.

### Specific Activity



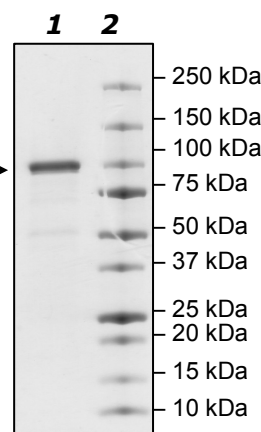
### 4-20% SDS-PAGE Coomassie staining

**Lane 1:**  
 PLA2G4A  
 (0.9ug loaded) →

**Lane 2:**  
 Protein Marker

**Purity:** ≥87%

**MW:** 87 kDa



OUR PRODUCTS ARE FOR RESEARCH USE ONLY. NOT FOR DIAGNOSTIC OR THERAPEUTIC USE.

To place your order, please contact us by Phone **1.858.829.3082** Fax **1.858.481.8694**  
 Or you can Email us at: [info@bpsbioscience.com](mailto:info@bpsbioscience.com)  
 Please visit our website at: [www.bpsbioscience.com](http://www.bpsbioscience.com)



6044 Cornerstone Court West, Suite E  
San Diego, CA 92121  
Tel: 1.858.829.3082  
Fax: 1.858.481.8694  
Email: [info@bpsbioscience.com](mailto:info@bpsbioscience.com)

**Sequence:**

MSFIDPYQHIIVEHQYSHKFTVVVLRATKVTKGAFGDMLDTPDPYVELFISTTPDSRKRT  
RHFNNNDINPVWNETFEFILDPNQENVLEITLMDANYVMDET LGTATFTVSSMKVGEKKE  
VPFIFNQVTEMVLEMSLEVCSPDLRFSMALCDQEKTFRQQRKEHIRESMKLLGPKN  
SEGLHSARDVPVAILGSGGGFRAMVGFSGVMKALYESGILDCATYVAGLSGSTWYM  
STLYSHPDFPEKGPEEINEELMKNVSHNPLLLLTPQKVCRYVESLWKKKSSGQPVTFTD  
IFGMLIGETLIHNRMNNTLSSLKEKVNTAQCPPLFTCLHVKPDVSELMFADWVEFSPYE  
IGMAKYGTFMAPDLFGSKFFMGTVVKYEEENPLHFLMGVWGSFAFSILFNRVLGVSGSQ  
SRGSTMEELENITTKHIVSNDSSDSDDESHEPKGTENEDAGSDYQSDNQASWIHRMI  
MALVSDSALFNTREGRAGKVHNFMLGLNLNTSYPLSPLSDFATQDSFDDDELDAAVAD  
PDEFERIYEPLDVKSKKIHVVDSGLTFNLPYPLILRPQRGVDLIISFDFSARPSDSSPPFK  
ELLLAEKWAKMNKLPFPKIDPYVFDREGLKECYVFKPKNPDMEKDCPTIIHFVLANINFR  
KYKAPGVPRETEEEKEIADFDIFDDPESPFSTFNFQYPNQAFKRLHDLMHFNTLNNIDVI  
KEAMVESIEYRRQNPSRCSVLSNVEARRFFNKEFLSKPKADYKDDDDKHHHHH

OUR PRODUCTS ARE FOR RESEARCH USE ONLY. NOT FOR DIAGNOSTIC OR THERAPEUTIC USE.

To place your order, please contact us by Phone **1.858.829.3082** Fax **1.858.481.8694**  
Or you can Email us at: [info@bpsbioscience.com](mailto:info@bpsbioscience.com)  
Please visit our website at: [www.bpsbioscience.com](http://www.bpsbioscience.com)