

Data Sheet

PDE8A1, GST-tag

Human, Recombinant, N-terminal GST tag
Catalog #: 60080
Lot #: 170426-G **Conc.:** 0.36 mg/ml

Formulated in: 40 mM Tris-HCl, pH 8.0,
 110 mM NaCl, 2.2 mM KCl, 3 mM DTT,
 0.04% Tween-20 and 20% Glycerol.

Stability: At least 6 months at -80°C . *Avoid freeze/thaw cycles. Storing diluted enzyme is not recommended, if necessary, use carrier protein (BSA 0.1 – 0.5%).*

References:

1. Wu P. and Wang P. *Proc. Natl. Acad. Sci. U.S.A.* **101(51)**, 17634-17639 (2004).
2. Gamanuma M. *et al.*, *Cell. Signal.* **15(6)**, 565-574 (2003).

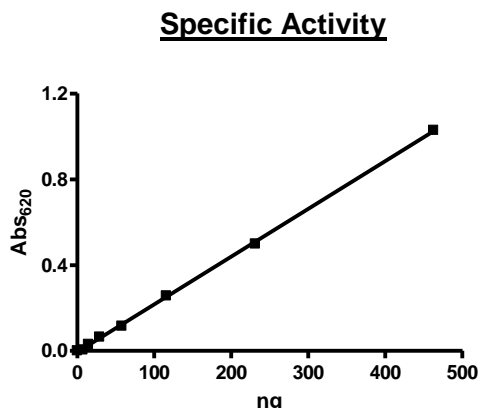
Description: Human PDE8A1 (GenBank Accession No. NM_002605), full length with N-terminal GST tag, MW = 123 kDa, expressed in a Baculovirus infected Sf9 cell expression system.

Specific Activity: ≥ 440 pmol/min/ μg .

One unit is defined as the amount of enzyme that will convert 1 pmole of 3', 5'-cAMP to 5'-AMP per min at 37°C . Assay condition: 10 mM Tris-HCl, pH 7.4, 10 mM MgCl₂, 0.1 mg/ml BSA, 0.05% Tween-20, 200 μM cAMP, and serial dilutions of PDE8A1 at 37°C for 20 min. Quantified by 5' nucleotidase cleaving the 5'-AMP product and releasing the phosphate group which is detected by Malachite Green Reagent.

Application: Useful for the study of enzyme kinetics, screening inhibitors, and selectivity profiling.

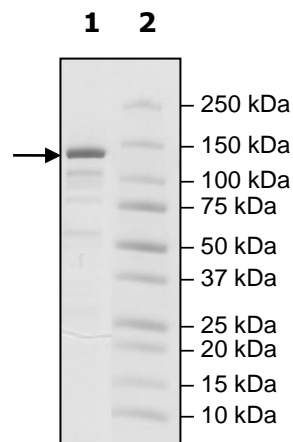
Quality Assurance



**4-20% SDS-PAGE
 Coomassie staining**

Lane 1:
 2 μg PDE8A1
Lane 2:
 Protein Marker

MW: 123 kDa
Purity: $\geq 70\%$



OUR PRODUCTS ARE FOR RESEARCH USE ONLY. NOT FOR DIAGNOSTIC OR THERAPEUTIC USE.

To place your order, please contact us by Phone **1.858.829.3082** Fax **1.858.481.8694**
 Or you can Email us at: info@bpsbioscience.com
 Please visit our website at: www.bpsbioscience.com