

Data Sheet

PDE4D7, GST-Tag

Human, Recombinant, N-terminal GST-tag

Catalog #: 60047

Lot#: 171120-A **Conc.:** 0.39 mg/ml

Formulated in: 45 mM Tris-HCl, pH 8.0, 124 mM NaCl, 2.4 mM KCl, 3 mM DTT, 20 mM glutathione and 10% glycerol.

Stability: At least 6 months at -80°C . Avoid freeze/thaw cycles. Protein may be diluted to ≥ 100 $\mu\text{g/ml}$ in PBS + glycerol and stored at -80°C .

References:

1. Wang, D., *et al.*, (2003). *Cell Signal.* **15(9)**:883-91.
2. Houslay, M.D. (2005). *Mol Pharmacol.* (2005). **68(3)**:563-7

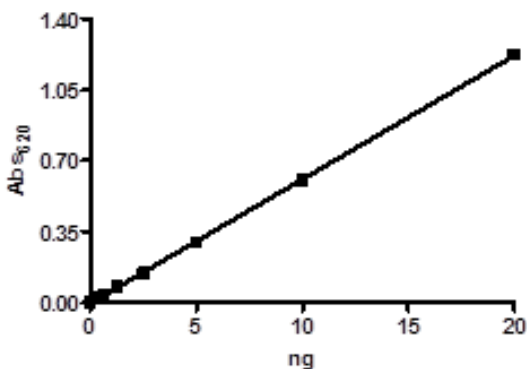
Description: Human PDE4D7 (GenBank Accession No. NM_001165899), a.a. 2-748(end) with N-terminal GST-tag, MW=111 kDa, expressed in a Baculovirus infected Sf9 cell expression system.

Specific Activity: 10,000 pmole/min/ μg . Assay Conditions: One unit is defined as the amount of enzyme that will convert 1 pmole of 3', 5'-cAMP to 5'-AMP per min at 37°C . Assay condition: 10 mM Tris-HCl, pH 7.4, 10 mM MgCl₂, 0.1 mg/ml BSA, 0.05% Tween-20, 200 μM cAMP, and serial dilutions of PDE-4D7 at 37°C for 20 min. Quantified by 5' nucleotidase cleaving the 5'-AMP product and releasing the phosphate group which is detected by Malachite Green Reagent.

Application: Useful for the study of enzyme kinetics, screening inhibitors, and selectivity profiling.

Quality Assurance

Specific Activity



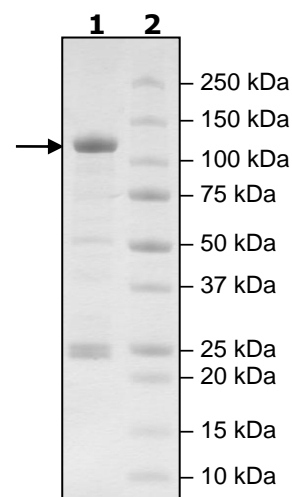
4-20% SDS-PAGE
Coomassie staining

Lane 1:
2 μg PDE4D7

Lane 2:
Protein Marker

MW: 111 kDa

Purity: $\geq 57\%$



OUR PRODUCTS ARE FOR RESEARCH USE ONLY. NOT FOR DIAGNOSTIC OR THERAPEUTIC USE.

To place your order, please contact us by Phone **1.858.829.3082** Fax **1.858.481.8694**

Or you can Email us at: info@bpsbioscience.com

Please visit our website at: www.bpsbioscience.com