

Data Sheet

PDE4B1

Human, recombinant, N-terminal GST tag
Catalog #: 60041
Lot#: 90520 **Conc.:** 1.4 mg/ml

Formulated in: 45 mM Tris-HCl, pH 8.0,
 124mM NaCl, 2.4 mM KCl, 18 mM
 glutathione, 3 mM DTT and 10% glycerol

Stability: >6 months at -80°C

References:

1. . Shah, V.O., *et al.*, *Am. J. Kidney Dis.* **48** (4), 616-628 (2006)
2. Smith, P.G., *et al.*, *Blood* **105** (1), 308-316 (2005).

Description:

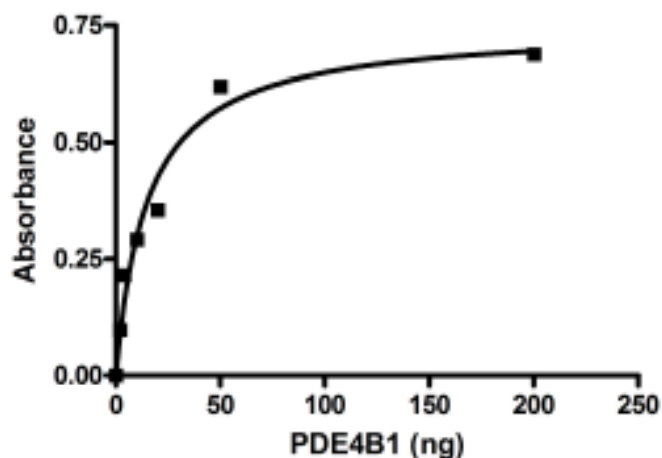
Human PDE4B1 (GenBank Accession No. NM_001037341), full length with N-terminal GST tag, MW = 109 kDa, expressed in a baculovirus-infected Sf9 cell expression system.

Specific Activity: 8532 pmol/min/μg

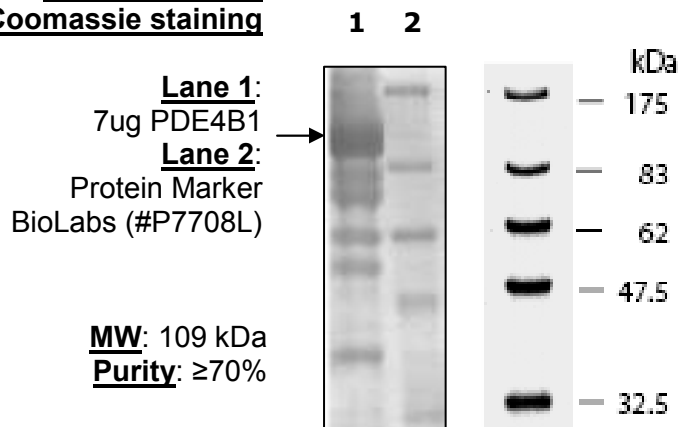
Assay Conditions: 10 mM Tris-HCl, pH 7.4, 10 mM MgCl₂, 200 μM 3', 5'-cAMP substrate, and 0.2 ng/μl PDE4B1 at 37°C for 20 min. Quantified by 5' nucleotidase cleavage of the 5' AMP product and release of the phosphate group which is detected by Malachite Green Reagent. One unit is defined as the amount of enzyme that will convert 1 pmole of 3', 5'-cAMP to 5' AMP per min at 37°C.

Application: Useful for the study of enzyme kinetics, screening inhibitors, and selectivity profiling.

Quality Assurance



**10% SDS-PAGE
 Coomassie staining**



OUR PRODUCTS ARE FOR RESEARCH USE ONLY. NOT FOR DIAGNOSTIC OR THERAPEUT

To place your order, please contact us by Phone **1.858.829.3082** Fax **1.858.481.8694**
 Or you can Email us at: info@bpsbioscience.com
 Please visit our website at: www.bpsbioscience.com



6044 Cornerstone Court West, Suite E
San Diego, CA 92121
Tel: 1.858.829.3082
Fax: 1.858.481.8694
Email: info@bpsbioscience.com

OUR PRODUCTS ARE FOR RESEARCH USE ONLY. NOT FOR DIAGNOSTIC OR THERAPEUTIC USE.

To place your order, please contact us by Phone **1.858.829.3082** Fax **1.858.481.8694**
Or you can Email us at: info@bpsbioscience.com
Please visit our website at: www.bpsbioscience.com