

Data Sheet

PDE4A1A/PDE4A4

Human, recombinant, N-terminal GST tag

Catalog #: 60040

Lot#: 120622-G **Conc.:** 0.13 mg/ml

Formulated in: 40 mM Tris-HCl, pH 8.0,
 110 mM NaCl, 2.2 mM KCl, 3 mM DTT
 and 20% glycerol.

Stability: >6 months at -80°C

References:

1. Sullivan, M., *et al.*, *Biochem. J.* **333**: 693-703 (1998).
2. Huston E, *et al.*, *J Cell Sci.* **119**:3799-810. (2006).

Application Reference(s):

1. Xia, M., *et al.* *Proc Natl Acad Sci U S A.* 2009 Feb 17;**106**(7):2412-7.

Description:

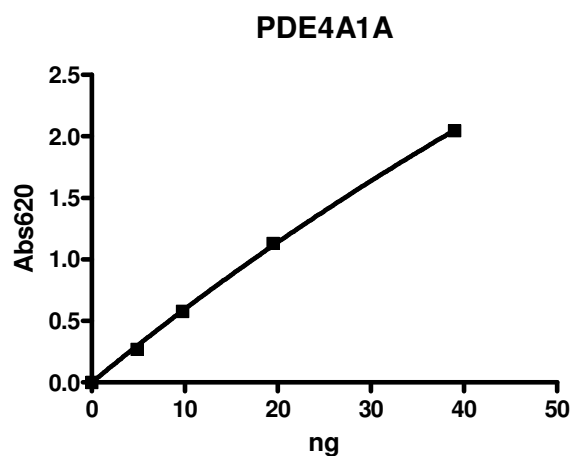
Human PDE4A1A, also known as PDE4A4 (GenBank Accession No. U97584), full length with N-terminal GST tag, MW= 100 kDa, expressed in a Baculovirus infected Sf9 cell expression system.

Specific Activity: 11105 pmol/min/μg. One unit is defined as the amount of enzyme that will convert 1 pmole of 3', 5'-cAMP to 5'-AMP per min at 37°C. Assay condition: 10 mM Tris-HCl, pH 7.4, 10 mM MgCl₂, 0.05% Tween-20, 200 μM cAMP, and PDE4A1A at 37°C for 20 min. Quantified by 5'-nucleotidase cleaving the 5'-AMP product and releasing the phosphate group which is detected by Malachite Green Reagent.

Application:

Useful for the study of enzyme kinetics, screening inhibitors, and selectivity profiling.

Quality Assurance

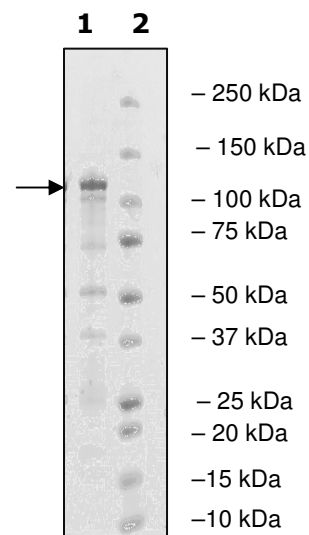


10% SDS-PAGE Coomassie staining

Lane 1:
2.6 μg PDE4A

Lane 2:
Protein Marker
Biorad (#161-0373)

MW: 100 kDa
Purity: ≥85%



OUR PRODUCTS ARE FOR RESEARCH USE ONLY. NOT FOR DIAGNOSTIC OR THERAPEUTIC USE.

To place your order, please contact us by Phone **1.858.829.3082** Fax **1.858.481.8694**

Or you can Email us at: info@bpsbioscience.com

Please visit our website at: www.bpsbioscience.com