

Data Sheet

PDE2A1

human, recombinant, N-terminal GST tag

Catalog #: 60020

Lot#: 130227-G Conc.: 0.19 mg/ml

Formulated in: 40 mM Tris-HCl, pH 8.0,
 110 mM NaCl, 2.2 mM KCl, 0.04% Tween-
 20, 20% glycerol, and 3 mM DTT.

Stability: >6 months at -80°C

References:

1. Seybold, J., *et al.*, *Blood* **105** (9), 3569-3576 (2005).
2. Martinez, S.E., *et al.*, *Proc. Natl. Acad. Sci. U.S.A.* **99** (20), 13260-13265 (2002).

Description:

Human PDE2A1 (GenBank Accession No. NM_002599), full length, with N-terminal GST tag, MW=132 kDa, expressed in a Baculovirus infected Sf9 cell expression system.

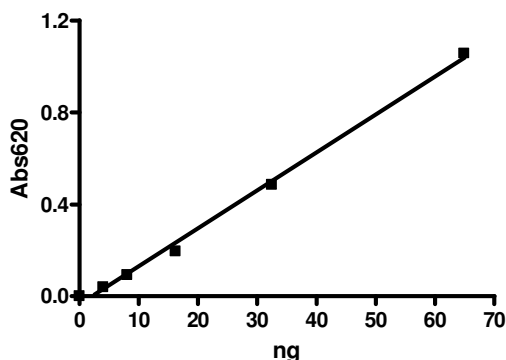
Specific Activity: 3442 pmol/min/μg. One unit is defined as the amount of enzyme that will convert 1 pmole of 3', 5'-cAMP to 5'-AMP per min at 37°C. Assay condition: 10 mM Tris-HCl, pH 7.4, 10 mM MgCl₂, 0.1 mg/ml BSA, 0.05% Tween-20, 200 μM cAMP, and serial dilutions of PDE2A at 37°C for 20 min. Quantified by 5' nucleotidase cleaving the 5'-AMP product and releasing the phosphate group which is detected by Malachite Green Reagent.

Application:

Useful for the study of enzyme kinetics, screening inhibitors, and selectivity profiling.

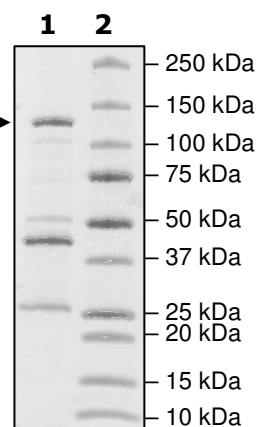
Quality Assurance

Specific Activity



4-20% SDS-PAGE Coomassie staining

Lane 1: →
 2 μg PDE2A
Lane 2:
 Protein Marker
 MW: 132kDa
 Purity: ≥33%



OUR PRODUCTS ARE FOR RESEARCH USE ONLY. NOT FOR DIAGNOSTIC OR THERAPEUTIC USE.

To place your order, please contact us by Phone **1.858.829.3082** Fax **1.858.481.8694**

Or you can Email us at: info@bpsbioscience.com

Please visit our website at: www.bpsbioscience.com