

## Data Sheet

### PDE2A V4 (Mouse), GST-tag

Mouse, Recombinant, N-terminal GST-tag

**Catalog #:** 60019

**Lot #:** 140321-1

**Conc.:** 0.4 mg/ml

**Formulated in:** 40 mM Tris-HCl, pH 8.0, 110 mM NaCl, 2.2 mM KCl, 0.04% Tween20, 1.6mM Glutathione, 20% glycerol

**Stability:** At least 6 months at  $-80^{\circ}\text{C}$ . Avoid freeze/thaw cycles. Storing diluted enzyme is not recommended, if necessary, use carrier protein (BSA 0.1 – 0.5%).

**References:**

1. Sadhu, K., *et al.*, *JHC* **47(7)**, 889-894 (1999).
2. Iffland, A., *et al.*, *Biochemistry* **44 (23)**, 8312-8325 (2005).

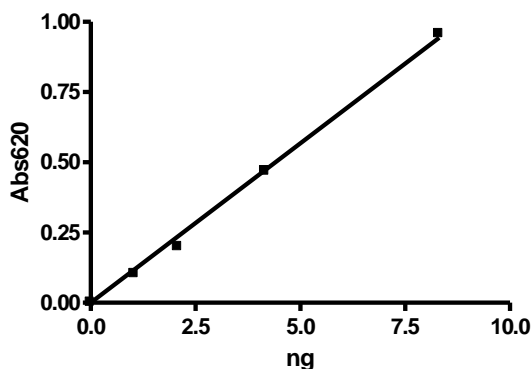
**Description:** Human PDE2A (GenBank Accession No. NM\_001143848), a.a 2-939 (end), with N-terminal GST tag, MW=132 kDa, expressed in a Baculovirus infected Sf9 cell expression system.

**Specific Activity:**  $\geq 20,000$  pmole/min/ $\mu\text{g}$ . One unit is defined as the amount of enzyme that will convert 1 pmole of 3', 5'-cAMP to 5'-AMP per min at  $37^{\circ}\text{C}$ . Assay condition: 10 mM Tris-HCl, pH 7.4, 10 mM MgCl<sub>2</sub>, 0.1 mg/ml BSA, 0.05% Tween-20, 200  $\mu\text{M}$  cAMP, and serial dilutions of PDE2A at  $37^{\circ}\text{C}$  for 20 min. Quantified by 5' nucleotidase cleaving the 5'-AMP product and releasing the phosphate group which is detected by Malachite Green Reagent.

**Application:** Useful for the study of enzyme kinetics, screening inhibitors, and selectivity profiling.

### Quality Assurance

**Specific Activity**



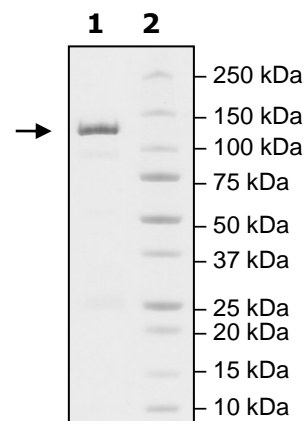
**4-20% SDS-PAGE  
Coomassie staining**

**Lane 1:**  
PDE2A, v4  
(1.9  $\mu\text{g}$  protein loaded)

**Lane 2:**  
Protein Marker

**Purity:**  $\geq 89\%$

**MW:** 130 kDa



OUR PRODUCTS ARE FOR RESEARCH USE ONLY. NOT FOR DIAGNOSTIC OR THERAPEUTIC USE.

To place your order, please contact us by Phone **1.858.829.3082** Fax **1.858.481.8694**

Or you can Email us at: [info@bpsbioscience.com](mailto:info@bpsbioscience.com)

Please visit our website at: [www.bpsbioscience.com](http://www.bpsbioscience.com)