

Data Sheet

PDE1C

Human, recombinant, N-terminal GST-tag

Catalog #: 60013

Lot#: 130104-G Conc.: 0.47 mg/ml

Formulated in: 40 mM Tris, pH 8.0, 110 mM NaCl, 2.2 mM KCl, 0.04% Tween 20, 3 mM DTT, and 20% glycerol.

Stability: >6 months at -80 °C

References:

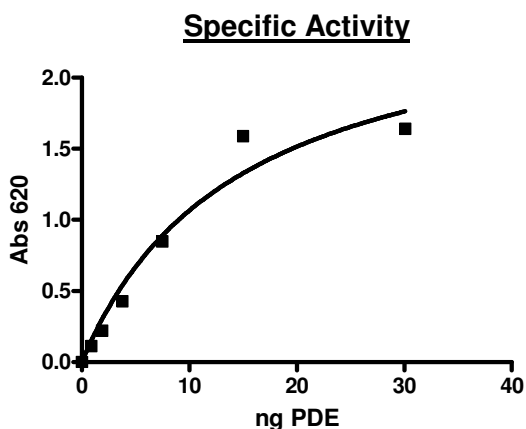
1. Vandeput, F., *et al.* (2007). *J. Biol. Chem.* Nov 9;**282(45)**:32749-57.
2. Cygnar, K.D., Zhao, H. (2009). *Nat. Neurosci.* Apr;**12(4)**:454-62.
3. Ortiz-Capisano, M.C., *et al.* (2009). *Am. J. Physiol. Regul. Integr. Comp. Physiol.* Nov;**297(5)**:R1469-76.

Description: Human PDE1C (GenBank Accession No. NM_005020), a.a. 2-634(end), with N-terminal GST-tag, MW=98.9 kDa, expressed in a Baculovirus-infected Sf9 cell expression system.

Specific Activity: 15000 pmol/min/μg. Assay condition: 10 mM Tris-HCl, pH 7.4, 10 mM MgCl₂, 0.05% Tween-20, 200 μM cAMP, and human PDE1C at 37°C for 20 min. Quantified by 5'-nucleotidase cleaving the 5'-AMP product and releasing the phosphate group which is detected by Malachite Green Reagent.

Application: Useful for the study of enzyme kinetics, screening inhibitors, and selectivity profiling.

Quality Assurance

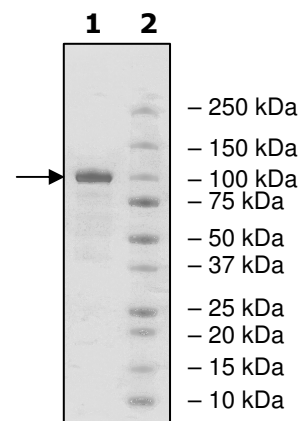


10% SDS-PAGE Coomassie staining

Lane 1:
4.41 μg PDE1C

Lane 2:
Protein Marker

MW: 98.9 kDa
Purity: ≥80%



OUR PRODUCTS ARE FOR RESEARCH USE ONLY. NOT FOR DIAGNOSTIC OR THERAPEUTIC USE.

To place your order, please contact us by Phone **1.858.829.3082** Fax **1.858.481.8694**

Or you can Email us at: info@bpsbioscience.com

Please visit our website at: www.bpsbioscience.com