

Data Sheet

PDE1A1

Human, recombinant, N-terminal GST tag

Catalog #: 60010

Lot#: 130411-G1 Conc.: 0.15 mg/ml

Formulated in: 40 mM Tris-HCl, pH 8.0,
 110 mM NaCl, 2.2 mM KCl, 20% glycerol
 and 3 mM DTT.

Stability: >6 months at -80 °C

References:

1. Nagel D.J *et al.*, *Circ. Res.* **98 (6)**, 777-784 (2006).
2. Goraya T.A. *et al.*, *J. Biol. Chem.* **279 (39)**, 40494-40504 (2004).

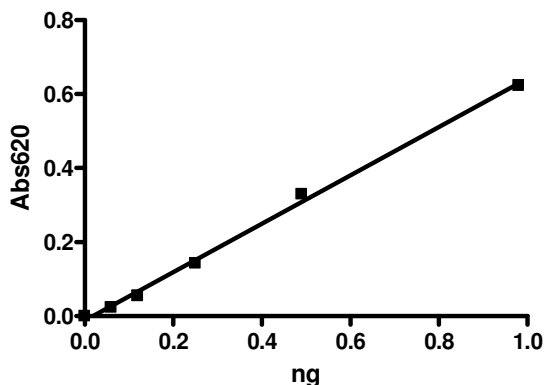
Description: Human PDE1A1 (GenBank Accession No. NM_005019), full length with N-terminal GST tag, MW= 88.3 kDa, expressed in a Baculovirus infected Sf9 cell expression system.

Specific Activity: 43,900 pmol/min/μg
 Assay description: One unit is defined as the amount of enzyme that will convert 1 pmole of 3', 5'-cAMP to 5'-AMP per min at 37°C. Assay condition: 10 mM Tris-HCl, pH 7.4, 10 mM MgCl₂, 0.1 mg/ml BSA, 0.05% Tween-20, 200 μM cAMP, and serial dilutions of PDE at 37°C for 20 min. Quantified by 5' nucleotidase cleaving the 5'-AMP product and releasing the phosphate group which is detected by Malachite Green Reagent.

Application: Useful for the study of enzyme kinetics, screening inhibitors, and selectivity profiling.

Quality Assurance

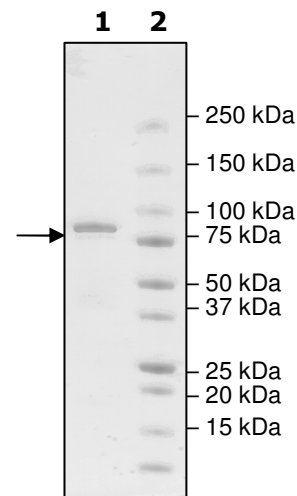
Specific Activity



**4-20% SDS-PAGE
 Coomassie staining**

Lane 1:
 1.95 μg PDE1A
Lane 2:
 Protein Marker

MW: 88.3 kDa
Purity: ≥84%



OUR PRODUCTS ARE FOR RESEARCH USE ONLY. NOT FOR DIAGNOSTIC OR THERAPEUTIC USE.

To place your order, please contact us by Phone **1.858.829.3082** Fax **1.858.481.8694**
 Or you can Email us at: info@bpsbioscience.com
 Please visit our website at: www.bpsbioscience.com