



6042 Cornerstone Court West, Suite B
San Diego, CA 92121
Tel: 1.858.829.3082
Fax: 1.858.481.8694
Email: info@bpsbioscience.com

Data Sheet

PRMT1, GST-Tag

Human, Recombinant, N-terminal GST tag

Catalog #: 51041

Lot #: 160902-G1 **Conc.:** 0.54 mg/ml

Formulated in: 40 mM Tris-HCl, pH 8.0,
110 mM NaCl, 2.2 mM KCl, 0.04%
Tween-20 and 20% Glycerol

Stability: At least 6 months at -80°C .
Avoid freeze/thaw cycles. Storing diluted
enzyme is not recommended, if
necessary, use carrier protein (BSA 0.1
– 0.5%).

References:

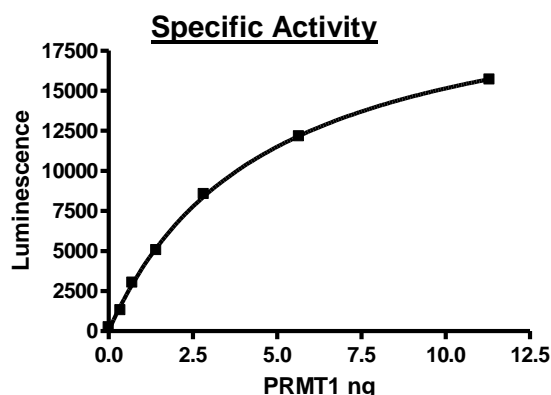
1. Sun X.J., *et al.*, *J Biol Chem.* **280**(42),
35261-35271 (2005).
2. Rega S. *et al.*, *Mol Cell Neurosci.*
18(1), 68-79 (2001).

Description: Human PRMT1 (GenBank
Accession No. NM_001536), amino acids 2-
end, with N-terminal GST tag, MW= 68 kDa,
expressed in a Baculovirus infected Sf9 cell
expression system.

Assay Conditions: Enzyme was incubated
with 0.25 μM of biotinylated H4 1-21 peptide
with 1 μM AdoMet in HMT buffer 2A in a 10 μl
reaction. 5 μl of Anti-Rabbit AlphaLISA
acceptor beads (1:250) and 5 μl of Primary
Antibody 4 (1:20) were added and incubation
continued for 30 min. Streptavidin Donor
beads (1:125) were added (10 μl) and
mixture was further incubated for 15 min at
RT before A-counts were measured.

Application: Useful for the study of enzyme
kinetics, screening inhibitors, and selectivity
profiling.

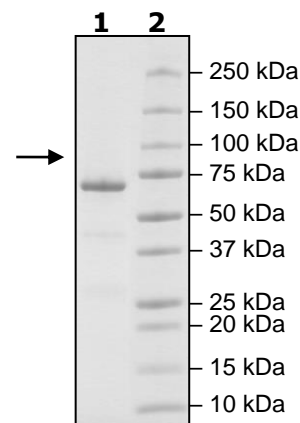
Quality Assurance



4-20% SDS-PAGE Coomassie staining

Lane 1:
2 μg PRMT1
Lane 2:
Protein Marker

MW: 70 kDa
Purity: $\geq 86\%$



OUR PRODUCTS ARE FOR RESEARCH USE ONLY. NOT FOR DIAGNOSTIC OR THERAPEUTIC USE.

To place your order, please contact us by Phone **1.858.202.1401** or **1.858.829.3082**, Fax **1.858.481.8694**

Or you can Email us at: info@bpsbioscience.com

Please visit our website at: www.bpsbioscience.com