

Data Sheet

SPL-1, His-Tag

Human, recombinant, C-terminal His-tag
Catalog #: 50300
Lot #: 141028-2 **Conc.:** 0.44 mg/ml

Formulated in: 50mM Tris pH8.0, 500mM NaCl, Variable imidazole, 3mM methionine, 1mM pyridoxal 5'-phosphate monohydrate, 1mM TCEP, 10% glycerol, 250mM imidazole

Stability: At least 6 months at -80°C . Avoid freeze/thaw cycles. Storing diluted enzyme is not recommended, if necessary, use carrier protein (BSA 0.1 – 0.5%).

References:

1. Reiss, U. *et al.*, *J. Biol. Chem.* **279** (2), 1281-1290 (2004).
2. Oskouian, B. *et al.*, *Proc. Natl. Acad. Sci. U.S.A.* **103** (46), 17384-17389 (2006).

Description:

Human sphingosine-1-phosphate lyase 1 (GenBank Accession No. NM_003901), a.a. 59-end, with C-terminal His-tag, MW = 58 kDa, expressed in a Baculovirus-infected Sf9 cell expression system.

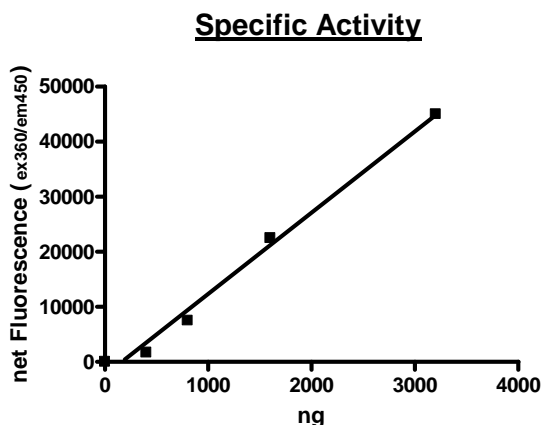
Assay Conditions:

SPL-1 reaction was done in 100 mM Phosphate buffer (pH=7.2) containing 200 μM Fluorogenic substrate, 250 μM PLP and S1PL-1 for 2 hours at 37 C. Fluorescence signal was read at Ex360/Em450.

Application:

Useful for the study of enzyme kinetics, screening inhibitors, and selectivity profiling.

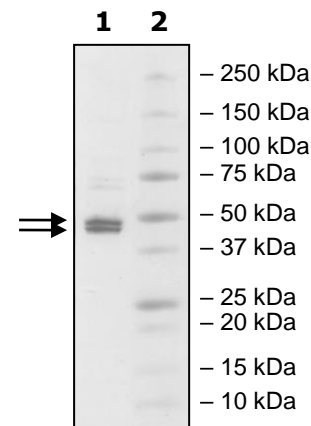
Quality Assurance



**4-20% SDS-PAGE
Coomassie staining**

Lane 1:
2 μg SPL-1
Lane 2:
Protein Marker

MW: 58 kDa
Purity: $\geq 90\%$



OUR PRODUCTS ARE FOR RESEARCH USE ONLY. NOT FOR DIAGNOSTIC OR THERAPEUTIC USE.

To place your order, please contact us by Phone **1.858.829.3082** Fax **1.858.481.8694**
 Or you can Email us at: info@bpsbioscience.com
 Please visit our website at: www.bpsbioscience.com