

Data Sheet

PKM2 mouse

Mouse, recombinant, N-terminal HIS tag

Catalog #: 50296

Lot#: 91013 Conc.: 4.61 mg/ml

Formulated in: 40 mM Tris-HCl, pH 8.0, 110 mM NaCl, 2.2 mM KCl, 200 mM imidazole, 20% glycerol, and 3 mM DTT.

Stability: >6 months at -80°C

References:

1. Spoden G.A. *et al.*, *Exp. Cell Res.* **315** (16), 2765-2774 (2009).
2. Christofk H.R. *et al.*, *Nature* **452** (7184), 230-233 (2008).

Description: Mouse Pyruvate kinase M2 (PKM2), also known as PKM1/M2, isoform a (GenBank Accession No. NM_011099), amino acids 2-end, with N-terminal His tag, MW = 58 kDa, expressed in an *E. coli* expression system.

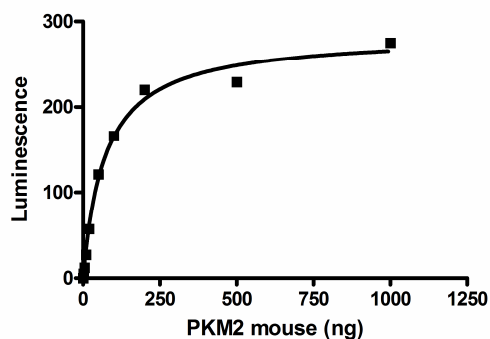
Specific Activity: 11 pmol/min/μg.

A 50 μl PKM2 reaction is conducted in a buffer containing 50 mM Tris (pH 7.4), 100 mM MgCl₂, 250 mM KCl, 40 mM ADP, 100 mM phosphoenolpyruvate (PEP) at room temperature for 15 min. ATP production is detected using Kinase-Glo Luminescent Kinase Assay Platform.

Application: Useful for the study of enzyme kinetics, screening inhibitors, and selectivity profiling.

Quality Assurance

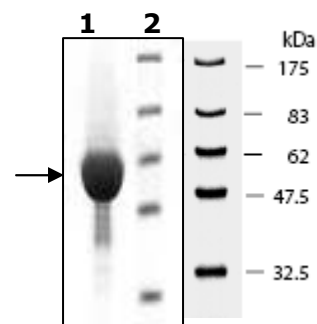
Mouse PKM2 Specific Activity



10% SDS-PAGE Coomassie staining

Lane 1:
10 μg PKM2
Lane 2:
Protein Marker
BioLabs (#P7708L)

MW: 58 kDa
Purity: >90%



OUR PRODUCTS ARE FOR RESEARCH USE ONLY. NOT FOR DIAGNOSTIC OR THERAPEUTIC USE.

To place your order, please contact us by Phone **1.858.829.3082** Fax **1.858.481.8694**

Or you can Email us at: info@bpsbioscience.com

Please visit our website at: www.bpsbioscience.com