

Data Sheet

JARID1B (PLU-1, KDM5B)

Human, Recombinant, N-terminal His-FLAG-tag
Catalog #: 50121
Lot #: 150812-1 **Conc.:** 0.35 mg/ml

Formulated in: 40 mM Tris-HCl, pH 8.0, 110 mM NaCl, 2.2 mM KCl, 0.04% Tween-20, 80 µg/mL FLAG peptide and 20% glycerol.

Stability: At least 6 months at -80°C. Avoid freeze/thaw cycles. Storing diluted enzyme is not recommended, if necessary, use carrier protein (BSA 0.1 – 0.5%).

References:

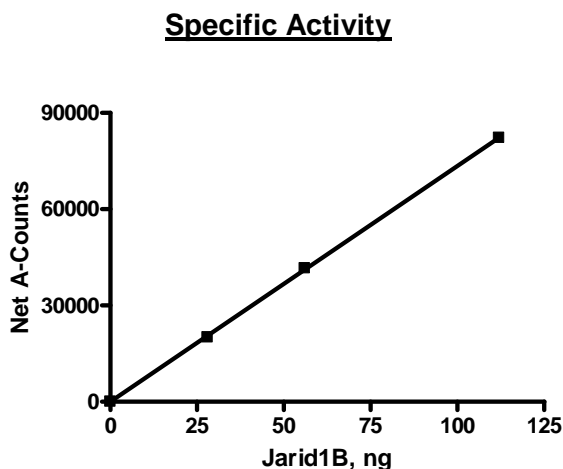
1. Yamane K, et al. (2007). *Mol. Cell* **25** (6): 801–12.
2. Barrett A, et al. (2007). *Int. J. Cancer* **121** (2): 265–75.

Description: Human JARID1B, also known as PLU-1 and KDM5B (GenBank Accession No. NM_006618) (amino-acids 2-751) with N-terminal His-FLAG-tag, MW=88 kDa, expressed in Sf9 cells via a baculovirus expression system.

Specific Activity: 0.1 pmol/min/µg
 Assay conditions: 10 µl reaction mix containing assay buffer with 20 mM HEPES (pH 7.4), 50 mM NaCl, 1mM TCEP, 500 µM α-ketoglutarate, 25 µM iron, 2mM ascorbic acid, 0.01% Tween-20, 0.5 µM biotinylated peptide substrate, and JARID1B (20 – 100 ng) added to the wells. Add antibody against demethylated K4 peptide. Incubate for 30 min, then Streptavidin-conjugated secondary antibody followed by Alpha Screening detection.

Application: Useful for the study of enzyme kinetics, screening inhibitors, and selectivity profiling.

Quality Assurance

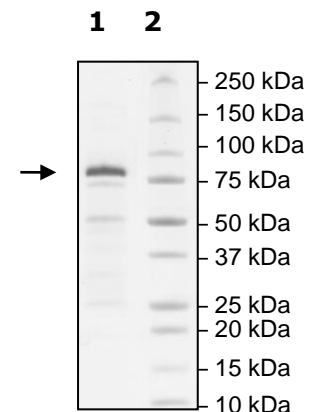


4-20% SDS-PAGE
Coomassie staining

Lane 1:
JARID1B
 2.6ug loaded
Lane 2:
 Protein Marker

Purity: ≥80%

MW: 88 kDa



OUR PRODUCTS ARE FOR RESEARCH USE ONLY. NOT FOR DIAGNOSTIC OR THERAPEUTIC USE.

To place your order, please contact us by Phone **1.858.829.3082** Fax **1.858.481.8694**

Or you can Email us at: info@bpsbioscience.com

Please visit our website at: www.bpsbioscience.com