

Data Sheet

JMJD2D, GST-tag

Human, Recombinant, N-terminal GST-tag
Catalog #: 50117
Lot #: 150408-G2 **Conc.:** 0.35 mg/ml

Formulated in: 40 mM Tris pH 8.0, 110 mM NaCl, 2.2 mM KCl, 3 mM DTT and 20% glycerol

Stability: At least 6 months at -80°C .
 Avoid freeze/thaw cycles. Storing diluted enzyme is not recommended, if necessary, use carrier protein (BSA 0.1 – 0.5%).

References:

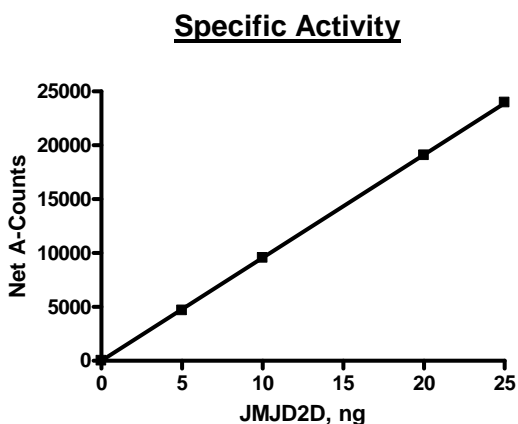
1. Katoh M., Int J Oncol. 2004 Jun; **24(6)**:1623-8.
2. Shin S. et al., Biochem Biophys Res Commun. 2007 Feb 23; **353(4)**:973-7.

Description: Human JMJD2D (GenBank Accession No. NM_018039) (amino-acids 2-354) with N-terminal GST tag, MW=67 kDa, expressed in a Baculovirus infected Sf9 cell expression system.

Specific Activity: ≥ 0.14 pmole/min/ μg
 Assay Conditions: 10 μl reaction mix containing assay buffer with 20 mM HEPES (pH 7.4), 50 mM NaCl, 1 mM TCEP, 500 μM α -ketoglutarate, 25 μM iron, 2 mM ascorbic acid, 0.01% Tween-20, 0.5 μM biotinylated peptide substrate, and JMJD2D (5 – 25 ng) added to the wells. Add antibody against demethylated K₉ peptide. Incubate for 30 min, then Streptavidin-conjugated secondary antibody followed by Alpha Screening detection.

Application: Useful for the study of enzyme kinetics, screening inhibitors, and selectivity profiling.

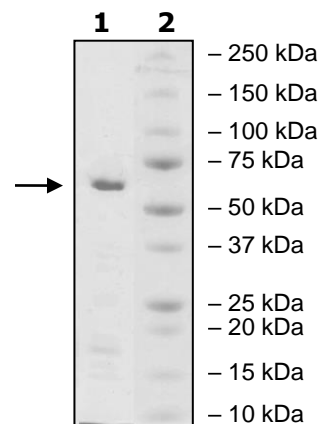
Quality Assurance



4-20% SDS-PAGE
Coomassie staining

Lane 1:
2 μg JMJD2D
Lane 2:
Protein Marker

MW: 67 kDa
Purity: $\geq 90\%$





6044 Cornerstone Court West, Suite E
San Diego, CA 92121
Tel: 1.858.829.3082
Fax: 1.858.481.8694
Email: info@bpsbioscience.com

Sequence:

MSPILGYWKIKGLVQPTRLLEYLEEKYEEHLYERDEGDKWRNKKFELGLEFPNLPYYI
DGDVKLTQSMAIRYIADKHNMLGGCPKERAEISMLEGAVLDIRYGVSR IAYSKDFETLK
VDFLSKLPEMLKMFKDRLCHKTYLNGDHVTHPDFMLYDALDVVLYMDPMCLDAFPKLV
CFKKRIEAI PQIDKYLKSSKYIAWPLQG WQATFGGGDHLVPRGSGSGIQRPETMKS KAN
CAQNPNCNIMIFHPTKEEFNDFDKYIAYMESQGAHRAGLAKIIPPKEWKARETYDNISEI
LIATPLQQVASGRAGVFTQYHKKKKAMTVGEYRHLANSKKYQTPPHQNFEDLERKYW
KNRIYNSPIYGADISGSLFDENTKQWNLGHLGTIQDLLEKECGVVIEGVNTPYLYFGMW
KTTFAWHTEDMDLYSINYLHLGEPKTWYVVPPEHGQRLERLARELFPGSSRGC GAFLR
HKVALISPTVLKENGIPFNRI TQEAGEFMVTFPYGYHAGFNHGFNCAEAINFATPRWIDY
GKMASQCSCGEARVTF SMDAFVRILQPERYDLWKR GQDRAVVDHMEPRVPA

Red: GST-tag

Blue: Thrombin cleavage site

Black: JMJD2A (a.a. 2-354)

OUR PRODUCTS ARE FOR RESEARCH USE ONLY. NOT FOR DIAGNOSTIC OR THERAPEUTIC USE.
To place your order, please contact us by Phone **1.858.829.3082** Fax **1.858.481.8694**
Or you can Email us at: info@bpsbioscience.com
Please visit our website at: www.bpsbioscience.com