

## Data Sheet

### Sirtuin 6, GST-Tag

Human, Recombinant, N-terminal GST tag

**Catalog #:** 50017

**Lot #:** 170928-1      **Conc.:** 0.25 mg/ml

**Formulated in:** 40mM Tris pH8.0, 110mM NaCl, 2.2mM KCl, 0.04% Tween-20 and 20% glycerol.

**Stability:** At least 6 months at -80°C. *Avoid freeze/thaw cycles.*

**References:**

1. Kanfi, Y. *et al.*, *FEBS Lett.* 2008 Mar 5;**582(5)**:543-8.
2. Mostoslavsky, R. *et al.*, *Cell.* 2006 Jan 27;**124(2)**:315-29.

**Description:**

Human Sirtuin 6 (GenBank Accession No. NM\_016539), full length with N-terminal GST tag, MW= 66 kDa, expressed in an *E. coli* expression system.

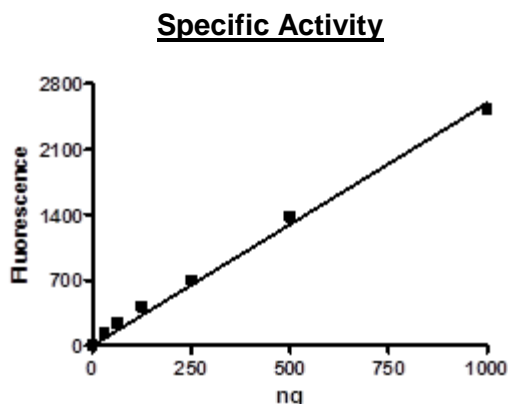
**Specific Activity:** 1.5 pmol/min/μg

Assay Conditions: 25 mM Tris/HCl, pH 8.0, 137 mM NaCl, 2.7 mM KCl, 1 mM MgCl<sub>2</sub>, and 0.1 mg/ml BSA, 20 μM BPS SIRT6 substrate 2 (Catalog #50084), 500 μM NAD<sup>+</sup> and Sirtuin 6 (18 – 2000 ng). Incubation condition: 60 min at 37°C followed by developing for 15 min at room temperature.

**Application:**

Useful for the study of enzyme kinetics, screening inhibitors, and selectivity profiling.

## Quality Assurance



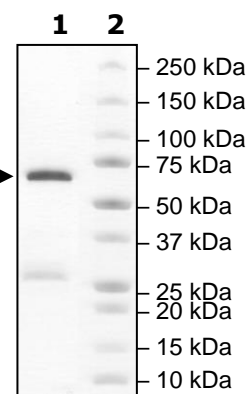
**4-20% SDS-PAGE  
Coomassie staining**

**Lane 1:**  
Sirt6 →

**Lane 2:**  
Protein Marker

**MW:** 66 kDa

**Purity:** ≥80%



OUR PRODUCTS ARE FOR RESEARCH USE ONLY. NOT FOR DIAGNOSTIC OR THERAPEUTIC USE.

To place your order, please contact us by Phone **1.858.829.3082** Fax **1.858.481.8694**

Or you can Email us at: [info@bpsbioscience.com](mailto:info@bpsbioscience.com)

Please visit our website at: [www.bpsbioscience.com](http://www.bpsbioscience.com)