

## Data Sheet

### PI3 Kinase (p110 $\alpha$ /p55 $\gamma$ ), His-Tag

Human, Recombinant, N-terminal His-Tag

**Catalog #:** 40645

**Lot #:** 161215      **Conc.:** 0.1 mg/ml

**Formulation:** 50 mM sodium phosphate, pH 7.0, 300 mM NaCl, 150 mM imidazole, 0.1 mM PMSF, 0.25 mM DTT, 25% glycerol.

**Stability:** At least 6 months at  $-80^{\circ}\text{C}$ . Avoid freeze/thaw cycles. Storing diluted enzyme is not recommended, if necessary, use carrier protein (BSA 0.1 – 0.5%).

**References:**

1. Terauchi, Y., *et al.* *Nature Genet.* **21**: 230-235 (1999)
2. Fukao, T., *et al.*, *Nature Immunol.* **3**: 295-304 (2002)

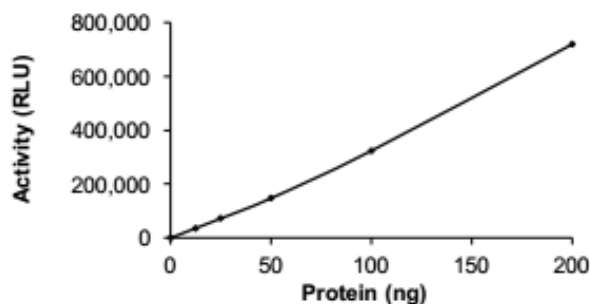
**Description:**

Complex of recombinant full-length human p110 $\alpha$  (GenBank Accession No. NM\_006218), with N-terminal His-Tag and recombinant full length, human p55 $\gamma$  (GenBank Accession No. BC021622), no tag. Co-expressed in Sf9 cells in a Baculovirus expression system. p110 $\alpha$  MW=111 kDa, p85 $\alpha$  MW=61 kDa.

**Application:** Useful for the study of enzyme kinetics, screening inhibitors, and selectivity profiling.

## Quality Assurance

**Specific Activity**



**4-20% SDS-PAGE  
Coomassie staining**

**Lane 1:**  
p110 $\alpha$   
and p55 $\gamma$   
**Lane 2:**  
Protein Marker

**MW:** 111 kDa, p110 $\alpha$   
61 kDa, p55 $\gamma$   
**Purity:**  $\geq 70\%$

