

Data Sheet

PKG1 α , His-Tag

Human, cGMP dependent, recombinant,
N-terminal HIS tag

Catalog #: 40082

Lot: 180511-1

Conc. 0.38 mg/ml

Formulated in: 40 mM Tris-HCl, pH 8.0,
110 mM NaCl, 2.2 mM KCl, 20% glycerol,
3mM DTT

Stability: At least 6 months at -80°C . Avoid
freeze/thaw cycles.

References:

1. Sharma, A.K. et al., J. Biol. Chem. 283 (47), 32860-32869 (2008)
2. Pohler, D. et al., FEBS Lett. 374 (3), 419-425 (1995)

Description:

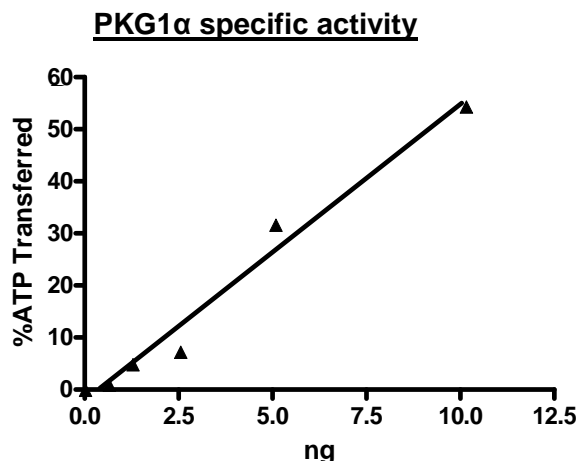
cGMP dependent Human PKG1alpha (GenBank Accession No. NM_001098512), a.a. 1-671 (end) with N-terminal His tag, expressed in Baculovirus infected Sf9 cell expression system. MW = 80 kDa.

Specific Activity: 1000 pmoles/min/ μg . Assay was done in a Kinase buffer containing 1 mM DTT using PAKtide (0.1 mg/ml) as a substrate with 20 μM ATP at 30°C for 45 min. The amount of ATP transferred was calculated using Kinase-Glo reagent (Promega).

Application:

Useful for the study of enzyme kinetics, screening inhibitors, and selectivity profiling.

Quality Assurance

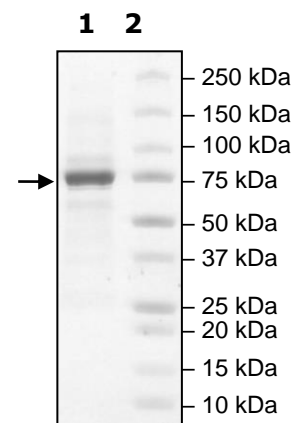


4-20% SDS-PAGE Coomassie staining

Lane 1:
PKG1alpha
Lane 2:
Protein Marker

MW: 80 kDa

Purity : $\geq 84\%$



OUR PRODUCTS ARE FOR RESEARCH USE ONLY. NOT FOR DIAGNOSTIC OR THERAPEUTIC USE.

To place your order, please contact us by Phone **1.858.829.3082** Fax **1.858.481.8694**

Or you can Email us at: info@bpsbioscience.com

Please visit our website at: www.bpsbioscience.com