

## Data Sheet

### **SMARCA2 (1375-1511), GST-tag**

Human, recombinant, N-terminal GST-tag  
Catalog #: 31141  
Lot#: 130614-D      Conc.: 5.22 mg/ml

**Formulated in:** 40mM Tris pH8.0,  
110mM NaCl, 2.2mM KCl, and 20%  
glycerol.

**Stability:** >6 months at -80°C

#### **References:**

1. Van Houdt JK., *et al. Nat Genet.* 2012; **44(4)**:445-9.
2. Wolff D., *et al. Mol Syndromol.* 2012; **2(6)**:237-244.

**Description:** Human SMARCA2, GenBank Accession No. NM\_003070, a.a. 1375-1511, with N-terminal GST-tag, MW=43kDa, expressed in an *E. coli* expression system.

#### **Assay Conditions:**

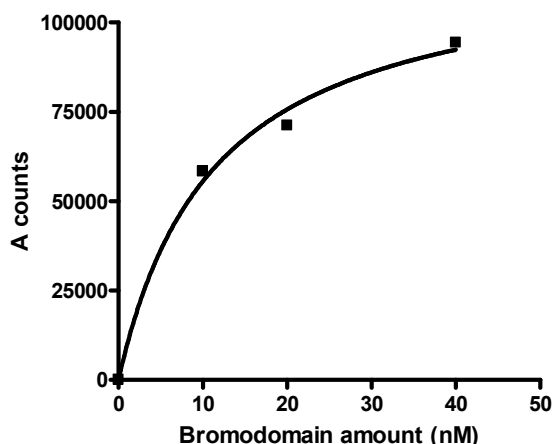
SMARCA2 is incubated with Bromodomain Ligand 2 in SMARCA2 buffer in a 10 µl reaction for 30 minutes. AlphaLISA® GSH acceptor beads (PerkinElmer) are added, followed by AlphaScreen® Streptavidin-conjugated donor beads (PerkinElmer). After 10 minutes incubation at RT, Alphacounts are measured.

#### **Application:**

Useful for the study of bromodomain binding assays, screening inhibitors and selectivity profiling.

## **Quality Assurance**

### **SMARCA2 Activity**

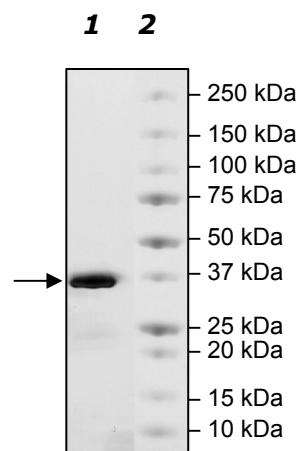


### **4-20% SDS-PAGE Coomassie staining**

**Lane 1:**  
2.5 µg SMARCA2

**Lane 2:**  
Protein Marker

**MW:** 43 kDa  
**Purity:** ≥92%



OUR PRODUCTS ARE FOR RESEARCH USE ONLY. NOT FOR DIAGNOSTIC OR THERAPEUTIC USE.

To place your order, please contact us by Phone **1.858.829.3082** Fax **1.858.481.8694**  
Or you can Email us at: [info@bpsbioscience.com](mailto:info@bpsbioscience.com)  
Please visit our website at: [www.bpsbioscience.com](http://www.bpsbioscience.com)



6044 Cornerstone Court W, Ste E  
San Diego, CA 92121  
**Tel:** 1.858.829.3082  
**Fax:** 1.858.481.8694  
**Email:** [info@bpsbioscience.com](mailto:info@bpsbioscience.com)

**Protein Sequence:**

MSPILGYWKIKGLVQPTRLLEYLEEKYEEHLYERDEGDKWRNKKFELGLEFPNLPYYI  
DGDVKLTQSMAIRYIADKHNMLGGCPKERAIEISMLEGAVLDIRYGVSRIAYSKDFETLK  
VDFLSKLPPEMLKMFEDRLCHKTYLNGDHVTHPDFMLYDALDVVLYMDPMCLDAFPKLV  
CFKKRIEAIQIDKYLKSSKYIAWPLQGQATFGGGDHPPKSDLEVLFQGPLGSPEFKL  
SPNPPKLTQMNAIIDTVINYKDRCNVEKVPSNSQLEIEGNSSGRQLSEVFIQLPSRKEL  
PEYYELIRKPVDFKKIKERIRNHKYRSLGDLEKDVMLLCHNAQTFNLEGSQIYEDSIVLQ  
SVFKSARQKIAKEEE

OUR PRODUCTS ARE FOR RESEARCH USE ONLY. NOT FOR DIAGNOSTIC OR THERAPEUTIC USE.

To place your order, please contact us by Phone **1.858.829.3082** Fax **1.858.481.8694**  
Or you can Email us at: [info@bpsbioscience.com](mailto:info@bpsbioscience.com)  
Please visit our website at: [www.bpsbioscience.com](http://www.bpsbioscience.com)