

## Data Sheet

### ATAD2B (953 – 1080)

Human, recombinant, N-terminal GST-tag  
**Catalog #:** 31125  
 Lot #: 120918-D      Conc.: 1.9 mg/ml

**Formulated in:** 40 mM Tris, 110 mM NaCl, 2.2 mM KCl, and 20% glycerol.

**Stability:** >6 months at -80°C

**References:**

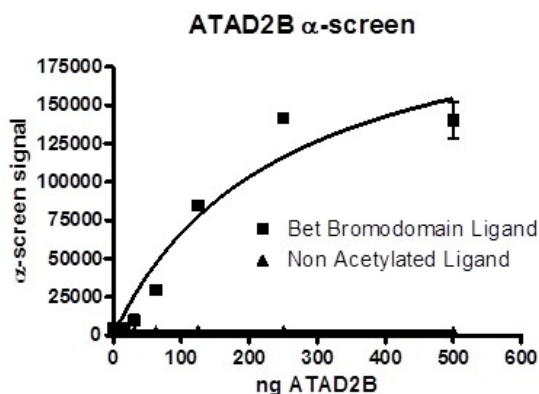
1. Leachman, N.T., *et al.*, *Dev Growth Differ.* 2010 Dec; **52(9)**:747-55.
2. Ota, T., *et al.*, *Nat Genet.* 2004 Jan; **36(1)**:40-5.

**Description:** Human bromodomain ATPase family, AAA domain containing 2B (variant 1), amino-acids 953 - 1080, (GenBank Accession No. NM\_017552) with N-terminal GST-tag, MW = 42 kDa, expressed in an *E. coli* expression system.

**Assay Conditions:** Assay was performed using ATAD2B Inhibitor Screening Assay Kit, Cat. #32605. ATAD2B protein is incubated with biotinylated acetyl-histone peptide substrate (Cat. #33000) in ATAD2B assay buffer in a 10 µl reaction for 1 hour at RT. AlphaLISA® GSH acceptor beads (Perkin Elmer) were then added, and the mixture was incubated for 30 minutes at room temperature (RT). AlphaScreen® Streptavidin-conjugated donor beads (Perkin Elmer) were then added. After 10 minute incubation at RT, Alphacounts are measured.

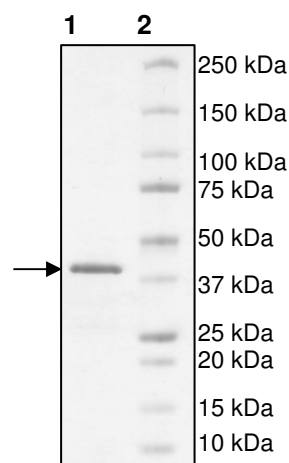
**Application:** Useful for the study of bromodomain binding assays, screening inhibitors, and selectivity profiling.

## Quality Assurance



**4-20% SDS-PAGE**  
**Coomassie staining**

**Lane 1:**  
 2 µg ATAD2B  
**Lane 2:**  
 Protein Marker  
**MW:** 42 kDa  
**Purity:** ≥95%



OUR PRODUCTS ARE FOR RESEARCH USE ONLY. NOT FOR DIAGNOSTIC OR THERAPEUTIC USE.

To place your order, please contact us by Phone **1.858.829.3082** Fax **1.858.481.8694**  
 Or you can Email us at: [info@bpsbioscience.com](mailto:info@bpsbioscience.com)  
 Please visit our website at: [www.bpsbioscience.com](http://www.bpsbioscience.com)



6044 Cornerstone Court West, Suite E  
San Diego, CA 92121  
Tel: 1.858.829.3082  
Fax: 1.858.481.8694  
Email: [info@bpsbioscience.com](mailto:info@bpsbioscience.com)

**Sequence:**

MSPILGYWKIKGLVQPTRLLEYLEEKYEEHLYERDEGDKWRNKKFELGLEFPNLPYYI  
DGDVKLTQSMARIYIADKHNMLGGCPKERAIEISMLEGAVLDIRYGVSRAYSDFETLK  
VDFLSKLPPEMLKMFEDRLCHKTYLNGDHVTHPDFMLYDALDVVLYMDPMCLDAFPKLV  
CFKKRIEAIQIDKYLKSSKYIAWPLQGQWQATFGGGDHPPKSD**LEVLFQGPLGSE**DQEE  
NTLRELRLFLRDVTKRLATDKRFNIFSKPVDIEEVSDYLEVIKEPMDLSTVITKIDKHNLYL  
TAKDFLKDIDLICSNALYNPDKDPGDKIIRHRACTLKDTAHAIIAAELDPEFNKLCEEIK  
E

OUR PRODUCTS ARE FOR RESEARCH USE ONLY. NOT FOR DIAGNOSTIC OR THERAPEUTIC USE.

To place your order, please contact us by Phone **1.858.829.3082** Fax **1.858.481.8694**  
Or you can Email us at: [info@bpsbioscience.com](mailto:info@bpsbioscience.com)  
Please visit our website at: [www.bpsbioscience.com](http://www.bpsbioscience.com)