

## Data Sheet

### ATAD2B (953 – 1080)

Human, recombinant, N-terminal HIS-tag

**Catalog #:** 31117

Lot #: 130402      Conc.: 2.47 mg/ml

**Formulated in:** 50 mM Tris-HCl, pH 8.0,  
138 mM NaCl, 2.7 mM KCl, and 10%  
glycerol.

**Stability:** >6 months at –80 °C

#### References:

1. Leachman, N.T., *et al.*, *Dev Growth Differ.* 2010 Dec; **52(9)**:747-55.
2. Ota, T., *et al.*, *Nat Genet.* 2004 Jan; **36(1)**:40-5.

#### Description:

Human bromodomain ATPase family, AAA domain containing 2B (variant 1), amino-acids 953 - 1080, (GenBank Accession No. NM\_017552) with N-terminal HIS-tag, MW = 15.9 kDa, expressed in an *E. coli* expression system.

#### Application:

Useful for the study of bromodomain binding assays, screening inhibitors, and selectivity profiling.

## Quality Assurance

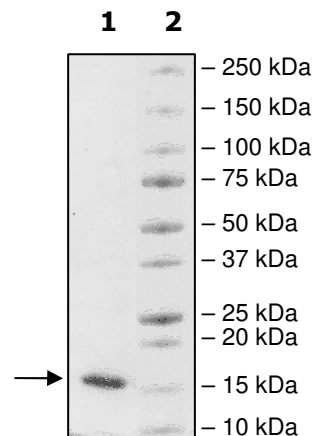
#### 4-20% SDS-PAGE Coomassie staining

**Lane 1:**  
2 µg ATAD2B

**Lane 2:**  
Protein Marker

**MW:** 15.9 kDa

**Purity:** ≥99%



OUR PRODUCTS ARE FOR RESEARCH USE ONLY. NOT FOR DIAGNOSTIC OR THERAPEUTIC USE.

To place your order, please contact us by Phone **1.858.829.3082** Fax **1.858.481.8694**

Or you can Email us at: [info@bpsbioscience.com](mailto:info@bpsbioscience.com)

Please visit our website at: [www.bpsbioscience.com](http://www.bpsbioscience.com)



6044 Cornerstone Court West, Suite E  
San Diego, CA 92121  
Tel: 1.858.829.3082  
Fax: 1.858.481.8694  
Email: [info@bpsbioscience.com](mailto:info@bpsbioscience.com)

**Protein Sequence:**

MHHHHHEDQEENTLRELRLFLRDVTKRLATDKRFNIFSKPVDIEEVSDYLEVIKEPM  
DLSTVITKIDKHNYLTAKDFLKDIDLICSNALEYNPKDPGDKIIRHRACKLKDTHAIIA  
AELDPEFNKLCEEIKE

OUR PRODUCTS ARE FOR RESEARCH USE ONLY. NOT FOR DIAGNOSTIC OR THERAPEUTIC USE.

To place your order, please contact us by Phone **1.858.829.3082** Fax **1.858.481.8694**  
Or you can Email us at: [info@bpsbioscience.com](mailto:info@bpsbioscience.com)  
Please visit our website at: [www.bpsbioscience.com](http://www.bpsbioscience.com)