

Rolipram

Catalog #: 27005

Lot #: 111118

Size: 10 mg

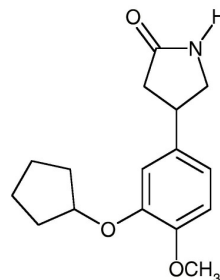
Structure:

CAS Registry #: 61413-54-5

Purity: ≥ 95%

Chemical Formula: C₁₆H₂₁NO₃

Molecular Weight: 275.34

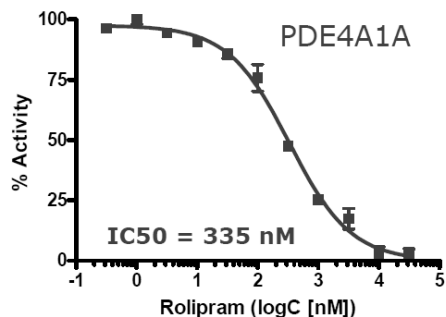


Description: Rolipram is a selective, cell permeable inhibitor of cAMP-specific phosphodiesterase 4 (PDE4). PDE4 enzymes inactivate cyclic AMP (cAMP) via hydrolysis to 5'-AMP. Rolipram has two enantiomeric forms, *R*(-) and *S*(+). This product is the racemic mixture of the two enantiomers.

Appearance: White solid.

Solubility: Soluble in DMSO (25 mg/ml warm) and Ethanol (25 mg/ml warm).

Biological Activity: Rolipram inhibited PDE4 with IC₅₀=1 μM using the BPS Bioscience PDE4A Assay Kit (Cat. # 60340).



Storage/Stability: Store at or below -20 °C.

Quality Control: The purity was determined by HPLC.

References:

1. Parker, C.A., *et al.*, *Synapse* **55**: 270 -279 (2005).
2. Barnard, J.W., *et al.*, *J. Appl. Physiol.* **77**: 774 – 781 (1994).
3. DeMarch, Z., *et al.*, *Neurobiol. Dis.* **30**: 375 – 387 (2008).

For R&D use only. Not for human, drug, diagnostic, household or other uses. MSDS available. Product of USA.

6044 Cornerstone Court West, Suite E, San Diego, CA 92121

Tel: (858) 829 -3082 • Fax: (858) 481 – 8694

Email: info@bpsbioscience.com • Visit: www.bpsbioscience.com • © 2011 BPS Bioscience Inc.