

Data Sheet

Anti- β -Actin

Mouse Monoclonal Antibody
Anti- β -Actin (BA3R) Loading Control
Catalog #: 25002

Specificity:

Recognizes native and denatured forms of β -Actin (~42kDa)

Immunogen:

Human β -Actin N-terminal peptide-KLH conjugate

Applications:

Dot Blot, ELISA, ICC, WB

Image:

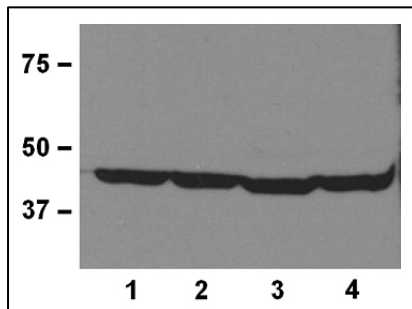


Fig. 1:1000 (1 μ g/mL) Ab dilution used in WB of 20 μ g/lane tissue lysates from human (1), mouse (2), rat (3), and rabbit (4).

Clonality | Host Species | Isotype:

BA3R | Mouse | IgG2b

Formulation:

1mg/mL in 10mM PBS, pH 7.2, with 0.05% NaN₃

Cross Reactivity:

β -Actin from human, mouse, rat, rabbit, and chicken. β -Actin from other species may also be detectable

Working Conditions:

WB (with ECL): 1:1000-3000 dilutions (incubate for 1 hour at room temperature)
ICC: 1:500-2000 dilution
For best results with other assays (e.g.: Dot Blot, ELISA, etc.), please determine optimal working dilution by titration test

Purification:

Protein A affinity chromatography from mouse ascites fluid

Storage and Stability:

Store at -20°C for up to 2 years. Centrifuge after first thaw to maximize product recovery. Aliquot to avoid repeated freeze-thaw cycles. Store aliquots at 4°C for 1-2 weeks

OUR PRODUCTS ARE FOR IN VITRO RESEARCH USE ONLY. NOT FOR DIAGNOSTIC OR THERAPEUTIC USE.

To place your order, please contact us by Phone **1.858.829.3082** Fax **1.858.481.8694**

Or you can Email us at: info@bpsbioscience.com

Please visit our website at: www.bpsbioscience.com