

Data Sheet

KRAS, His-Tag

Human, Recombinant, N-terminal His-tag
Catalog #: 11308
Lot #: 141204-1 **Conc.:** 0.75 mg/ml

Formulated in: 40 mM Tris-HCl, pH 8.0, 110 mM NaCl, 2.2 mM KCl, 0.04% Tween20, 20% glycerol, 3 mM DTT, 105 mM Imidazole

Stability: At least 6 months at -70°C. Avoid freeze/thaw cycles.

References:

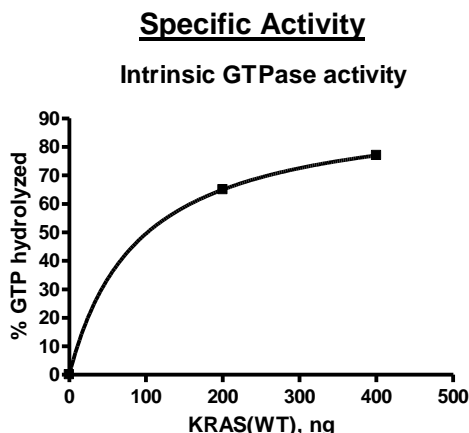
1. Roock, W., *et al.*, *Annals of Oncology*. 2008;**19(3)**:508-515.
2. Finocchiaro, G., *et al.*, *Journal of Clinical Oncology*. 2007 June; **25(18)**:4021.

Description: Human KRAS also known as C-K-RAS, CFC2, and K-RAS2A, GenBank Accession No. NM_033360, a.a. 2-185, with N-terminal His-tag, and expressed in a Baculovirus infected Sf9 cell expression system. MW=22 kDa.

Assay Conditions: Intrinsic GTPase reaction of KRAS was conducted at room temperature for 60 min using GTPase-Glo (Promega) reagents with 1 μM GTP.

Applications: Useful for the study of enzyme kinetics, screening inhibitors, and selectivity profiling.

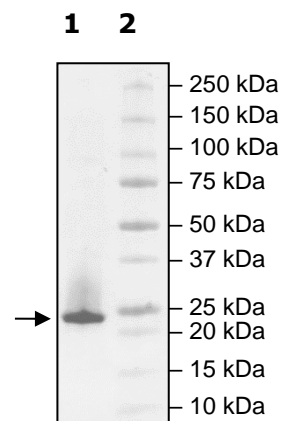
Quality Assurance



6-20% SDS-PAGE
Coomassie staining

Lane 1:
KRAS
 (2.4 ug loaded)
Lane 2:
 Protein Marker

Purity: ≥72%
MW: 22 kDa



OUR PRODUCTS ARE FOR RESEARCH USE ONLY. NOT FOR DIAGNOSTIC OR THERAPEUTIC USE.

To place your order, please contact us by Phone **1.858.202.1401** Fax **1.858.481.8694**
 Or you can Email us at: info@bpsbioscience.com
 Please visit our website at: www.bpsbioscience.com