

Data Sheet

KRAS (G12V), His-Tag

Human, Recombinant, N-terminal His-tag
Catalog #: 100480
Lot #: 150714-1 **Conc.:** 0.31 mg/ml

Formulated in: 40 mM Tris-HCl, pH 8.0, 110 mM NaCl, 2.2 mM KCl, 0.04% Tween20, 20% glycerol, 3 mM DTT, 120 mM Imidazole

Stability: At least 6 months at -70°C. Avoid freeze/thaw cycles.

References:

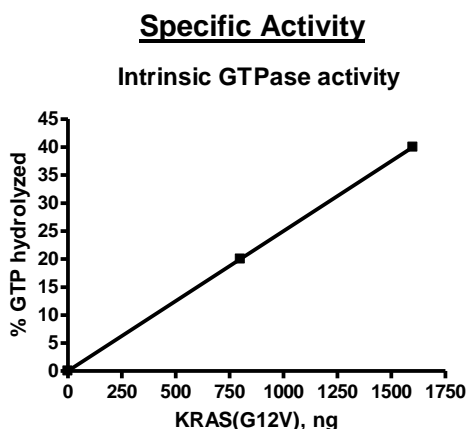
1. Martinelli, P., *et al.*, *Gut*. 2016;**65**:476-486.
2. Maraver, A., *et al.*, *Cancer Cell*. 2012 Aug;**22**(2):222-234.

Description: Human KRAS also known as C-K-RAS, CFC2, and K-RAS2A, GenBank Accession No. NM_033360, a.a. 2-185, with G12V mutation and N-terminal His-tag, and expressed in a Baculovirus infected Sf9 cell expression system. MW=22 kDa.

Assay Conditions: Intrinsic GTPase reaction of KRAS (G12V) was conducted at room temperature for 60 min using GTPase-Glo (Promega) reagents with 1 μM GTP.

Applications: Useful for the study of enzyme kinetics, screening inhibitors, and selectivity profiling.

Quality Assurance



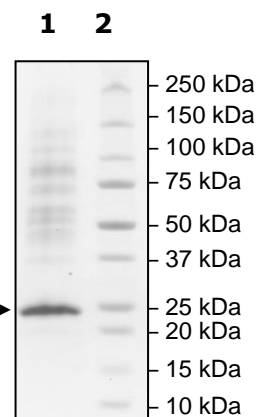
**6-20% SDS-PAGE
Coomassie staining**

Lane 1:
KRas(G12V)
(3 ug loaded)

Lane 2:
Protein Marker

Purity: ≥53% →

MW: 22 kDa



OUR PRODUCTS ARE FOR RESEARCH USE ONLY. NOT FOR DIAGNOSTIC OR THERAPEUTIC USE.

To place your order, please contact us by Phone **1.858.202.1401** Fax **1.858.481.8694**
 Or you can Email us at: info@bpsbioscience.com
 Please visit our website at: www.bpsbioscience.com