

Data Sheet

KRAS (G13D), His-Tag

Human, Recombinant, N-terminal His-tag

Catalog #: 100479

Lot #: 150811-1

Conc.: 0.36 mg/ml

Formulated in: 40 mM Tris-HCl, pH 8.0, 110 mM NaCl, 2.2 mM KCl, 0.04% Tween20, 20% glycerol, 3 mM DTT, 180 mM Imidazole

Stability: At least 6 months at -70°C. Avoid freeze/thaw cycles.

References:

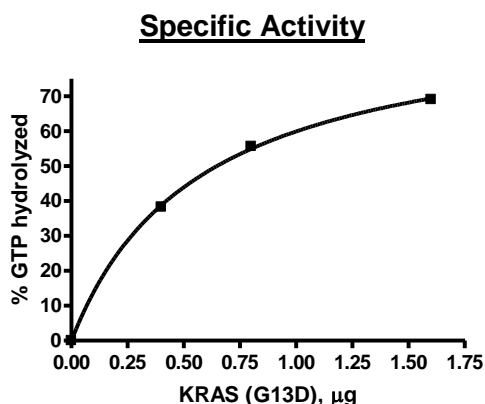
1. Roock, W., *et al.*, *JAMA*. 2010: **304(16)**: 1812-1820.
2. Kumar, S., *et al.*, *Gastrointestinal Cancer Research*. 2014. Jan;**7(1)**: 23-26.

Description: Human KRAS also known as C-K-RAS, CFC2, and K-RAS2A, GenBank Accession No. NM_033360, a.a. 2-185, with G13D mutation and N-terminal His-tag, and expressed in a Baculovirus infected Sf9 cell expression system. MW=22 kDa.

Assay Conditions: Intrinsic GTPase reaction of KRAS (G13D) was conducted at room temperature for 60 min using GTPase-Glo (Promega) reagents with 1 μM GTP.

Applications: Useful for the study of enzyme kinetics, screening inhibitors, and selectivity profiling.

Quality Assurance



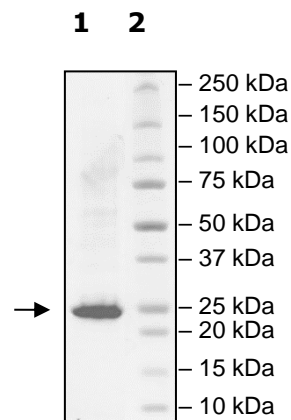
**6-20% SDS-PAGE
Coomassie Staining**

Lane 1:
 KRAS (G13D)
 (3 ug loaded)

Lane 2:
 Protein Marker

Purity: ≥90%

MW: 22 kDa



OUR PRODUCTS ARE FOR RESEARCH USE ONLY. NOT FOR DIAGNOSTIC OR THERAPEUTIC USE.

To place your order, please contact us by Phone **1.858.202.1401** Fax **1.858.481.8694**

Or you can Email us at: info@bpsbioscience.com

Please visit our website at: www.bpsbioscience.com