

## Data Sheet

### KRAS (G12C), His-Tag

Human, Recombinant, N-terminal His-tag

**Catalog #:** 100413

**Lot #:** 190731-G

**Conc.:** 0.33 mg/ml

**Formulated in:** 40 mM Tris-HCl, pH 8.0, 122 mM NaCl, 2.2 mM KCl and 20% glycerol.

**Stability:** At least 6 months at -70°C. Avoid freeze/thaw cycles.

#### References:

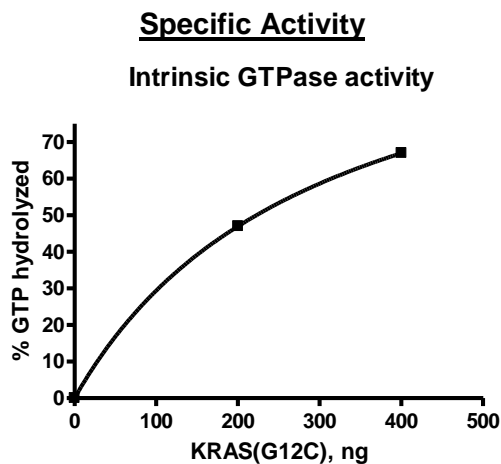
1. Lito, P., *et al.*, *Science*. 2016 Feb;**351(6273)**:604-608.
2. Dogan, S., *et al.*, *Clinical Cancer Research*. 2012 Nov;**18(22)**:6169-6177.

**Description:** Human KRAS also known as C-K-RAS, CFC2, and K-RAS2A, GenBank Accession No. NM\_033360, a.a. 2-186, with G12C mutation and N-terminal His-tag, expressed in an E. coli expression system. MW=23 kDa.

**Assay Conditions:** Intrinsic GTPase reaction of KRAS (G12C) was conducted at room temperature for 60 min using GTPase-Glo (Promega) reagents with 1  $\mu$ M GTP.

**Applications:** Useful for the study of enzyme kinetics, screening inhibitors, and selectivity profiling.

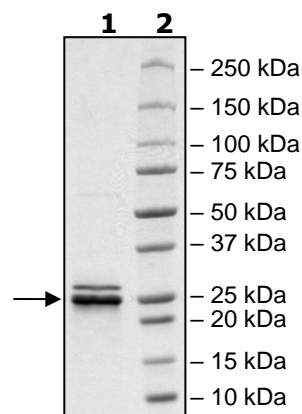
## Quality Assurance



#### 4-20% SDS-PAGE Coomassie staining

**Lane 1:**  
2 $\mu$ g KRAS  
**Lane 2:**  
Protein Marker

**MW:** 23 kDa  
**Purity:** 77%



OUR PRODUCTS ARE FOR RESEARCH USE ONLY. NOT FOR DIAGNOSTIC OR THERAPEUTIC USE.

To place your order, please contact us by Phone **1.858.202.1401** Fax **1.858.481.8694**

Or you can Email us at: [info@bpsbioscience.com](mailto:info@bpsbioscience.com)

Please visit our website at: [www.bpsbioscience.com](http://www.bpsbioscience.com)