

## Data Sheet

### **BCL2L2, His-Tag**

Human, Recombinant, C-terminal His-tag

**Catalog #:** 100091

**Lot #:** 180601-2      **Conc.:** 0.73 mg/ml

**Formulated in:** 40 mM Tris-HCl, pH 8.0, 110 mM NaCl, 2.2 mM KCl, 0.04% Tween-20, 20% glycerol, 3mM DTT and Imidazole

**Stability:** At least 6 months at  $-80^{\circ}\text{C}$ . Avoid freeze/thaw cycles. Storing diluted enzyme is not recommended, if necessary, use carrier protein (BSA 0.1-0.5%)

**References:**

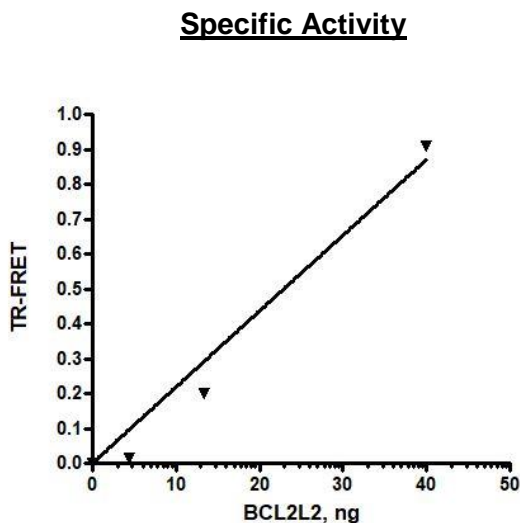
1. Shi, G. *et al.*, *Experimental Brain Research*. Nov; **216(2)** : 225-230 (2012).
2. Qu J. *et al.*, *Journal of Cellular Physiology*. 230(3): 1868-1878 (2018).

**Description:** Human BCL2L2, also known as Bcl-2-like protein 2, and BCL2 like 2, a. a. 1-172, with C-terminal His-tag, GenBank Accession No. NM\_004050, MW = 20 kDa, expressed in an *E. coli* expression system.

**Assay Conditions:** Add 20-40 ng of BCL2L2 to 20  $\mu\text{l}$  reaction mix containing 130 nM MCL1 substrate, anti-His Tb-labeled donor, and dye-labeled acceptor. Incubate 1h at room temperature. Read TR-FRET ( $\lambda_{\text{exc}}=340$  nm,  $\lambda_{\text{em1}}=620$  nm and  $\lambda_{\text{em2}}=665$  nm).

**Application:** Useful for the study of enzyme kinetics, screening inhibitors, selectivity profiling, and as a positive control for western blot studies.

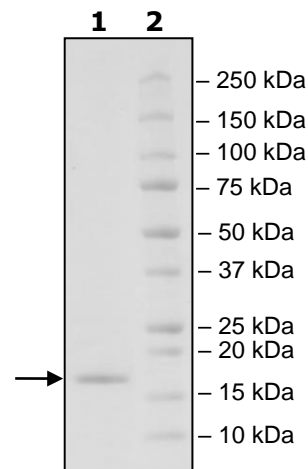
## Quality Assurance



**4-20% SDS-PAGE**  
**Coomassie staining**

**Lane 1:**  
2 $\mu\text{g}$  BCL2L2  
**Lane 2:**  
Protein Marker

**MW:** 20 kDa  
**Purity:** 90%



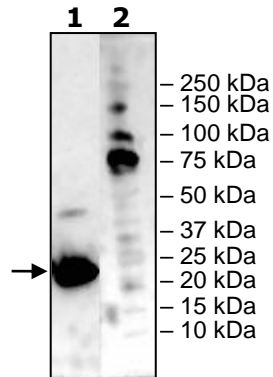
OUR PRODUCTS ARE FOR RESEARCH USE ONLY. NOT FOR DIAGNOSTIC OR THERAPEUTIC USE.

To place your order, please contact us by Phone **1.858.829.3082** Fax **1.858.481.8694**  
 Or you can Email us at: [info@bpsbioscience.com](mailto:info@bpsbioscience.com)  
 Please visit our website at: [www.bpsbioscience.com](http://www.bpsbioscience.com)

**Western Blot**

**Lane 1:**  
**BCL2L2**

**Lane 2:**  
Protein Marker



OUR PRODUCTS ARE FOR RESEARCH USE ONLY. NOT FOR DIAGNOSTIC OR THERAPEUTIC USE.

To place your order, please contact us by Phone **1.858.829.3082** Fax **1.858.481.8694**  
Or you can Email us at: [info@bpsbioscience.com](mailto:info@bpsbioscience.com)  
Please visit our website at: [www.bpsbioscience.com](http://www.bpsbioscience.com)