

Data Sheet

BTLA, Fc Fusion, Avi-Tag

Human, Recombinant, C-terminal Fc fusion protein, Avi-Tag

Catalog #: 100033

Lot #: 180425-G **Conc.:** 0.37 mg/ml

Formulated in: 8 mM Phosphate, pH 7.4, 110 mM NaCl, 2.2 mM KCl, and 20% Glycerol

Stability: At least 6 months at -80°C . Avoid freeze/thaw cycles. Protein may be diluted to $\geq 100 \mu\text{g/ml}$ in PBS + glycerol and stored at -80°C .

References:

1. Flynn R, *et al.*, PLoS One. 2013 Oct 29;**8(10)**:77991.
2. Uchiyama M, *et al.*, *Transplantaion*. 2014 Feb 15;**97(3)**:301-9.

Description:

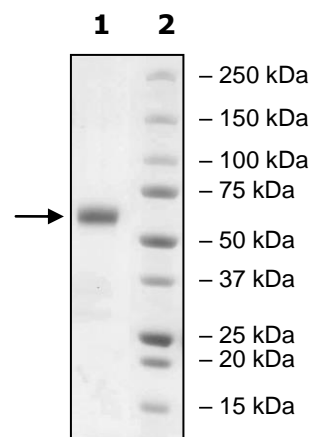
Human B- and T-lymphocyte attenuator (BTLA), also known as CD272, with C-terminal Avi-TagTM fused to the Fc-region of Human IgG1. GenBank Accession No. NM_181780, a.a. 31-150, expressed in a HEK293 cell expression system. MW = 42 kDa. This protein runs at a higher apparent M.W. by SDS-PAGE due to glycosylation.

Quality Assurance

4-20% SDS-PAGE Coomassie staining

Lane 1:
2ug BTLA
Lane 2:
Protein Marker

MW: 42 kDa
+ glycans
Purity: $\geq 90\%$



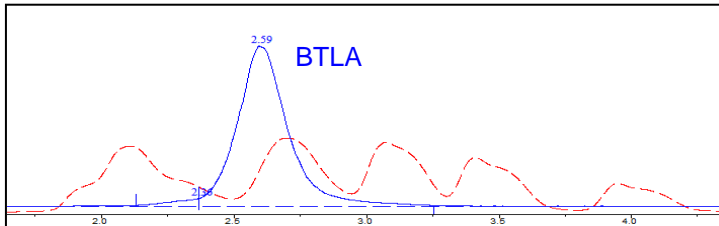
OUR PRODUCTS ARE FOR RESEARCH USE ONLY. NOT FOR DIAGNOSTIC OR THERAPEUTIC USE.

To place your order, please contact us by Phone **1.858.829.3082** Fax **1.858.481.8694**
Or you can Email us at: info@bpsbioscience.com
Please visit our website at: www.bpsbioscience.com



6042 Cornerstone Court W, Ste B
San Diego, CA 92121
Tel: 1.858.829.3082
Fax: 1.858.481.8694
Email: info@bpsbioscience.com

Gel Filtration Curve



<10% Aggregation

OUR PRODUCTS ARE FOR RESEARCH USE ONLY. NOT FOR DIAGNOSTIC OR THERAPEUTIC USE.

To place your order, please contact us by Phone **1.858.829.3082** Fax **1.858.481.8694**
Or you can Email us at: info@bpsbioscience.com
Please visit our website at: www.bpsbioscience.com