

Data Sheet

LTBR

Human, recombinant, Fc fusion protein

Catalog #: 71112

Lot#: 131113-D **Conc.:** 0.70 mg/ml

Formulated in: 40 mM Tris-HCl, pH 8.0,
110 mM NaCl, 2.2 mM KCl, and 20%
glycerol

Stability: >6 months at -80°C . *Avoid
freeze/thaw cycles.*

References:

1. Crowe, P.D., *et al.*, *Science*. 1994
Apr 29;**264(5159)**:707-10.
2. Wu, M.Y., *et al.*, *J Biol Chem*. 1999
Apr 23;**274(17)**:11868-73.

Description:

Human secreted lymphotoxin beta receptor (LTBR)-Fc fusion protein, also known as, Tumor Necrosis Factor C Receptor (TNFCR), and CD18, GenBank Accession No. NM_002342, a.a 28-219, expressed in a HEK293 cell expression system. MW = 48 kDa (monomer). This protein runs at a higher apparent M.W. by SDS-PAGE due to glycosylation.

Application:

Useful for the study of enzyme kinetics, screening inhibitors, and selectivity profiling.

Quality Assurance

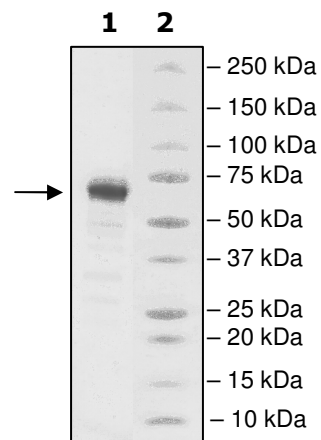
4-20% SDS-PAGE Coomassie staining

Lane 1:
3.5 μg LTBR-Fc

Lane 2:
Protein Marker

MW: 48 kDa

Purity: $\geq 90\%$



OUR PRODUCTS ARE FOR RESEARCH USE ONLY. NOT FOR DIAGNOSTIC OR THERAPEUTIC USE.

To place your order, please contact us by Phone **1.858.829.3082** Fax **1.858.481.8694**

Or you can Email us at: info@bpsbioscience.com

Please visit our website at: www.bpsbioscience.com



6044 Cornerstone Court W, Ste E
San Diego, CA 92121
Tel: 1.858.829.3082
Fax: 1.858.481.8694
Email: info@bpsbioscience.com

Sequence:

SQPQAVPPYASENQTCRDQEKEYYEPQHRICCSRCPPGTYVSAKCSRIRDTCATCA
ENSYNEHWNYLTICQLCRPCDPVMGLEEIAPCTSKRKTQCRCQPGMFCAAWALECT
HCELLSDCPPGTEAELKDEVGKGNHCVPCAGHFQNTSSPSARCQPHTRCENQGL
VEAAPGTAQSDTTCKNPLEPLPP**DI GRMD**PKSCDKTHTCPPCPAPELLGGPSVFLFP
PKPKDTLMISRTPEVTCVVVDVSHEDPEVKFNWYVDGVEVHNAKTKPREEQYNSTYRV
VSVLTVLHQDWLNGKEYKCKVSNKALPAPIEKTISKAKGQPREPQVYTLPPSREEMTKN
QVSLTCLVKGFPYPSDIAVEWESNGQPENNYKTTTPVLDSDGSFFLYSKLTVDKSRWQQ
GNVFSCSVMHEALHNHYTQKSLSLSPGK

Black: LTBR (aa 28-219)

Blue: linker

Red: Fc of human IgG1

OUR PRODUCTS ARE FOR RESEARCH USE ONLY. NOT FOR DIAGNOSTIC OR THERAPEUTIC USE.

To place your order, please contact us by Phone **1.858.829.3082** Fax **1.858.481.8694**

Or you can Email us at: info@bpsbioscience.com

Please visit our website at: www.bpsbioscience.com