

Data Sheet

UBE1, FLAG-Tag Recombinant

Human, Recombinant, N-terminal FLAG-tag

Catalog #: 80301**Lot #:** 200414**Conc.:** 1.02 mg/ml

Formulated in: 40 mM Tris-HCl, pH 8.0, 110 mM NaCl, 2.2 mM KCl, 0.04% Tween20, 20% glycerol, 3 mM DTT, 80 µg/ml FLAG peptide.

Stability: At least 6 months at -80°C. Avoid freeze/thaw cycles.

References:

1. Su Z.L. *et al.*, *Leuk. Lymphoma* **49** (9), 1821-1822 (2008).
2. Ramser J. *et al.*, *Am. J. Hum. Genet.* **82** (1), 188-193 (2008).

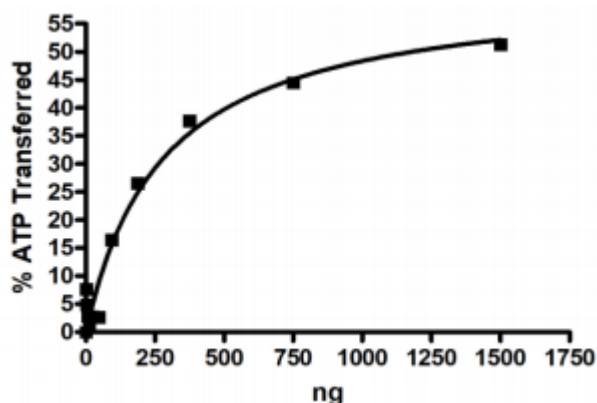
Description: Human Ubiquitin Activating Enzyme (E1) (UBE1), also known as UBA1, GenBank Accession No. NM_003334, a.a. 2-1058(end), with N-terminal FLAG-tag, expressed in a Baculovirus infected Sf9 cell expression system, MW=119 kDa.

Specific Activity: 3 pmole/min/µg
Assay Conditions: Assay was done according to UBE1 Inhibitor Screening Assay Kit (BPS Bioscience #79957) with UBE1 titrated from 1500 ng/rxn to 0 ng/rxn.

Application: Useful in conjunction with E2 and E3 for the study of enzyme kinetics, screening inhibitors, and selectivity profiling.

Quality Assurance

Specific Activity



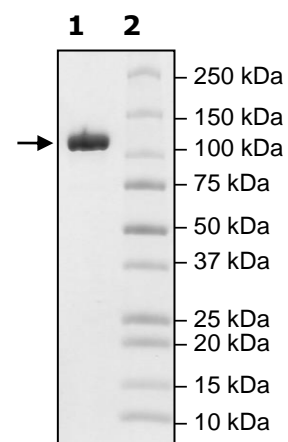
4-20% SDS-PAGE Coomassie staining

Lane 1:
UBE1

Lane 2:
Protein Marker

Purity: ≥90%

MW: 119 kDa



OUR PRODUCTS ARE FOR RESEARCH USE ONLY. NOT FOR DIAGNOSTIC OR THERAPEUTIC USE.

To place your order, please contact us by Phone **1.858.202.1401** Fax **1.858.481.8694**

Or you can Email us at: support@bpsbioscience.com

Please visit our website at: www.bpsbioscience.com