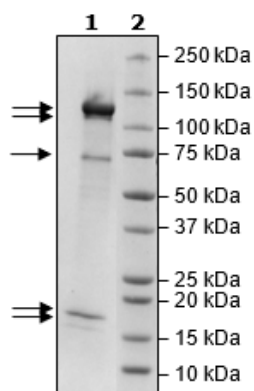


Product Information

| | |
|---------------------------|--|
| Construct: | Rbx1 (M5I) (His-2-108(end)) / CUL4B (His-3-913(end)) / DDB1 (FLAG-2-1140(end)) / DCAF15 (FLAG-2-600(end)) / DDA1 (FLAG-2-102(end)) |
| Concentration: | 0.24 mg/ml |
| Species: | Human |
| Formulated In: | 40 mM Tris-HCl, pH 8.0, 110 mM NaCl, 2.2 mM KCl, 0.04% Tween-20, 20% glycerol |
| Expression System: | HEK293 |
| Format: | Aqueous buffer solution |
| Stability: | At least 6 months at -80°C. Avoid freeze/thaw cycles. |
| Storage: | -80°C |
| Genbank Accession: | DDB1: NM_001923; CUL4B: NM_003588.4; DCAF15: NM_138353.4; DDA1: NM_024050.6; RBX1: NM_014248 |
| MW: | DDB1: 128 kDa; CUL4B: 105 kDa; DCAF15: 67 kDa; DDA1: 13 kDa; RBX1: 13 kDa |
| Purity: | ≥90% |
| Assay Conditions: | Assay was performed according to DCAF15 TR-FRET Assay Kit with DCAF15 titrated up to 50 nM. |
| Applications: | Useful for the study of enzyme kinetics, screening inhibitors, and selectivity profiling. |

Quality Control Data

4-20% SDS-PAGE Coomassie Staining



DCAF15 Activity

