

Data Sheet

UBE1, GST-Tag

Human recombinant, N-terminal GST-tag

Catalog #: 100402

Lot #: 190827-1 **Conc:** 0.44 mg/ml

Formulated in: 40 mM Tris-HCl, pH 8.0, 110 mM NaCl, 2.2 mM KCl, 0.04% Tween-20, 3 mM DTT, 20% Glycerol and Glutathione.

Stability: At least 6 months at -80°C . *Avoid freeze/thaw cycles.*

References:

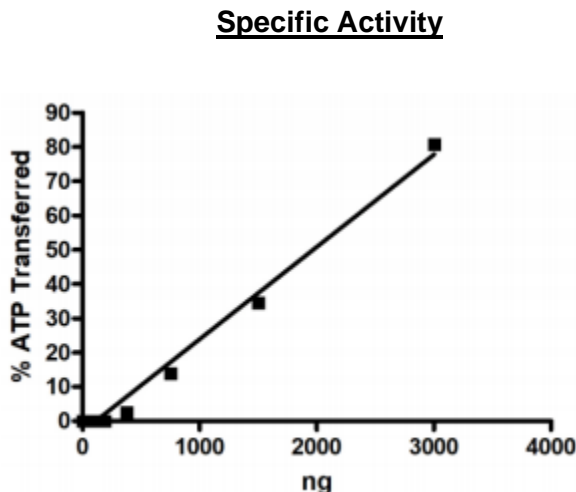
1. Ramser, J., *et al.*, *AJHG*. 2018;**82(1)**: 188-193.
2. Leidecker, O., *et al.*, *Cell Cycle*. 2012; **11(6)**: 1142-1150.

Description: Human Ubiquitin Activating Enzyme (E1) (UBE1), also known as UBA1, GenBank Accession No. NM_003334, a.a. 2-1058(end) with N-terminal GST-tag, expressed in a Baculovirus infected Sf9 cell expression system. MW = 145 kDa.

Specific Activity: 1 pmole/min/ μg
Assay Conditions: Assay was done according to UBE1 Inhibitor Screening Assay Kit (BPS Bioscience #79957) with UBE1 titrated from 6000 ng /rxn to 0 ng/rxn.

Application: Useful for the study of enzyme kinetics, screening inhibitors, and selectivity profiling.

Quality Assurance

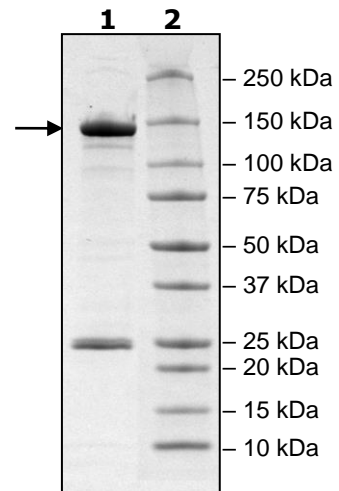


**4-20% SDS-PAGE
Coomassie staining**

Lane 1:
2 μg UBE1
Lane 2:
Protein Marker

MW: 145 kDa

Purity: 68%



OUR PRODUCTS ARE FOR RESEARCH USE ONLY. NOT FOR DIAGNOSTIC OR THERAPEUTIC USE.

To place your order, please contact us by Phone **1.858.202.1401** Fax **1.858.481.8694**

Or you can Email us at: info@bpsbioscience.com

Please visit our website at: www.bpsbioscience.com