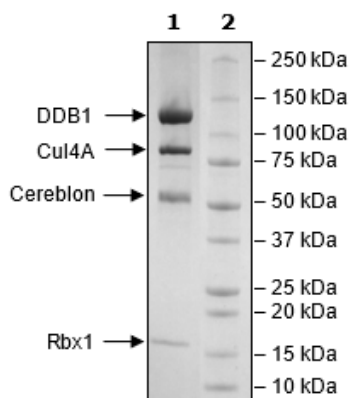


Product Information

Construct:	Cereblon (FLAG-2-442(end))/DDB1 (FLAG-2-1140(end))/Rbx1(M5I) (His-2-108(end))/Cul4A (His-2-759(end))
Concentration:	0.66 mg/ml
Species:	Human
Formulated In:	40 mM Tris-HCl pH 8.0, 110 mM NaCl, 2.2 mM KCl, 0.04% Tween-20, and 20% glycerol
Expression System:	HEK293
Format:	Aqueous buffer solution
Stability:	At least 6 months at -80°C. Avoid freeze/thaw cycles.
Storage:	-80°C
Genbank Accession:	Cereblon: NM_016302; DDB1: NM_001923; Cul4A: NM_003589; Rbx1: NM_014248
MW:	Cereblon: 51 kDa; DDB1: 128 kDa; Cul4A: 88 kDa; Rbx1: 13 kDa
Purity:	≥90%
Assay Conditions:	Assay was done according to PROTAC Optimization Kit for BET Bromodomain-Cereblon Binding (BPS Bioscience #79770) with Cereblon complex titrated from 250 ng/rxn to 0 ng/rxn
Applications:	Useful for the study of enzyme kinetics, screening inhibitors, and selectivity profiling.

Quality Control Data

4-20% SDS-Page Coomassie Staining



Cereblon-BRD3 Activity

