

3CL Protease (P252L) (SARS-CoV-2) Recombinant

Catalog: 101692

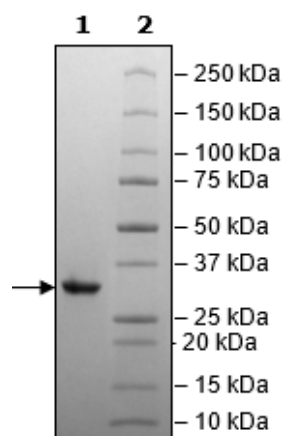
Lot: 230217

Product Information

Description:	Recombinant SARS-CoV-2 3C-like Protease, full length, encompassing amino acids 1-306(end). This construct does not contain a tag. The recombinant protein contains the mutation of interest (P252L) and is affinity purified.
Species:	SARS-CoV-2
Construct:	3CL Protease (P252L) (1-306(end)) (SARS-CoV-2)
Mutations:	P252L
Concentration:	0.32 mg/ml
Expression System:	<i>E. coli</i>
Purity:	≥90%
Format:	Aqueous buffer solution.
Formulated In:	40 mM Tris-HCl, pH 8.0, 110 mM NaCl, 2.2 mM KCl, and 20% glycerol
MW:	34 kDa
Genbank Accession:	YP_009725301
Stability:	At least 6 months at -80°C.
Storage:	-80°C
Instructions for Use:	Thaw on ice and gently mix prior to use. DO NOT VORTEX. Perform a quick spin before opening. Aliquot into small volumes and flash freeze for long term storage. Avoid multiple freeze/thaw cycles.
Assay Conditions:	Assay run according to 3CL Protease (P252L) (SARS-CoV-2) Assay Kit (BPS Bioscience #78839) with various amounts of 3CL Protease (P252L).
Applications:	Useful for the study of enzyme kinetics, screening inhibitors, and selectivity profiling.

Quality Control Data

4-20% SDS-PAGE Coomassie Staining



3CL Protease (P252L) Activity

