

Data Sheet

3CL Protease, MBP-tag, His-tag (SARS-CoV-1)

SARS-CoV-1, Recombinant, N-terminal MBP-tag, C-terminal His-tag

Catalog #: 100739

Lot #: 200624

Conc: 2.0 mg/ml

Formulated in: 40 mM Tris-HCl, pH 8.0, 110 mM NaCl, 2.2 mM KCl, 20% glycerol, 3 mM DTT, 8 mM maltose.

Stability: At least 6 months at -80°C. Avoid freeze/thaw cycles.

References:

1. Zhang, L., *et al.*, *Science*, 2020 Apr; **368(6489)**: 409-412.
2. Hsu, M.F. *et al.*, *JBC*. 2005 Mar; **280**:31257-31266.

Description: Severe acute respiratory Coronavirus 3C-like protease (SARS-CoV-1 3CL Protease), a.a. 1-306(full length), with an N-terminal MBP-tag, and C-terminal His-tag, expressed in an *E. coli* expression system, MW=78.5 kDa.

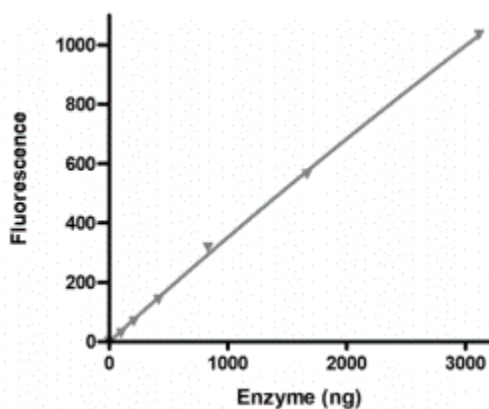
Specific Activity: >25 pmol/min/μg

Assay Conditions: Add 40 μl of 3CL protease diluted in 1x assay buffer. Start the reaction by adding 10 ul of diluted substrate. Incubate 1h. Read fluorescence (λ_{exc}=360 nm, λ_{em}=460 nm). Total volume is 50 μl.

Applications: Useful for the study of enzyme kinetics, screening inhibitors, and selectivity profiling.

Quality Assurance

3CL Protease SARS-CoV-1 Activity



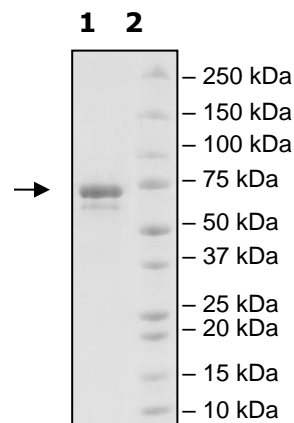
**4-20% SDS-PAGE
Coomassie staining**

Lane 1:
3CL protease

Lane 2:
Protein Marker

MW: 78.5 kDa

Purity: ≥85%



OUR PRODUCTS ARE FOR RESEARCH USE ONLY. NOT FOR DIAGNOSTIC OR THERAPEUTIC USE.

To place your order, please contact us by Phone **1.858.202.1401** Fax **1.858.481.8694**

Or you can Email us at: info@bpsbioscience.com

Please visit our website at: www.bpsbioscience.com