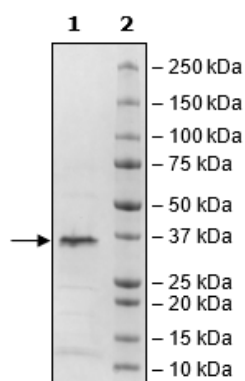


Product Information

Description:	Recombinant SARS-Cov-2 papain-like protease protein (PLPro) also known as ofr1ab polyprotein, encompassing amino acids 1564-1882. This construct contains an N-terminal His-tag (6xHis). The recombinant protein was affinity purified.
Species	SARS-CoV-2
Construct:	PLPro (His-1564-1882) (SARS-CoV-2)
Concentration:	0.19 mg/ml
Expression System:	<i>E. coli</i>
Purity:	86%
Format:	Aqueous buffer solution.
Formulated In:	40 mM Tris-HCl, pH 8.0, 110 mM NaCl, 2.2 mM KCl, 0.04% Tween-20, 20% glycerol, 3 mM DTT, and 175 mM Imidazole
MW:	37 kDa
Genbank Accession:	QHD43415
Stability:	At least 6 months at -80°C.
Storage:	-80°C
Instructions for Use:	Thaw on ice and gently mix prior to use. DO NOT VORTEX. Perform a quick spin before opening. Aliquot into small volumes and flash freeze for long term storage. Avoid multiple freeze/thaw cycles.
Assay Conditions:	Assay was done according to Papain-like Protease (SARS-CoV-2) Assay Kit: Protease Activity (BPS Bioscience #79995) with various amounts of Papain-like protease.
Applications:	Useful for the study of enzyme kinetics, screening inhibitors, and selectivity profiling.

Quality Control Data

4-20% SDS-PAGE Coomassie Staining



PLPro Activity

