

## Data Sheet

### 3CL Protease, MBP-tag (SARS-CoV-2)

SARS-CoV-2, Recombinant, N-terminal MBP-tag

**Catalog #:** 100707

**Lot #:** 200417-1

**Conc:** 1.65 mg/ml

**Formulated in:** 40 mM Tris-HCl, pH 8.0, 110 mM NaCl, 2.2 mM KCl, 20% glycerol, 3 mM DTT, 8 mM maltose.

**Stability:** At least 6 months at -80°C. Avoid freeze/thaw cycles.

**References:**

1. Zhang, L., *et al.*, *Science*, 2020 Apr; **368(6489)**: 409-412.
2. Hsu, M.F. *et al.*, *JBC*. 2005 Mar; **280**:31257-31266.

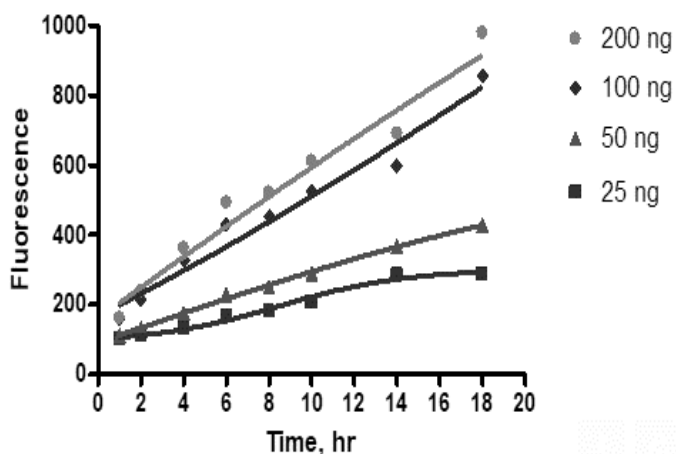
**Description:** Severe acute respiratory Coronavirus 2 3C-like protease (SARS-CoV-2 3CL Protease), GenBank Accession No. YP\_009725301, a.a. 1-306(full length), with an N-terminal MBP-tag, expressed in an *E. coli* expression system, MW=77.5 kDa.

**Assay conditions:** Add 30 µl of 3CL protease and 10 µl of compound diluted in 1x assay buffer. Incubate 30 min at room temperature. Start the reaction by adding 10 µl of diluted substrate. Immediately place plate in plate reader. Read kinetics for 60 min ( $\lambda_{exc}=360$  nm,  $\lambda_{em}=460$  nm). Final concentration of DMSO is 1%. Total volume is 50 µl.

**Applications:** Useful for the study of enzyme kinetics, screening inhibitors, and selectivity profiling.

### Quality Assurance

**3CL Protease SARS-CoV-2 Kinetics**



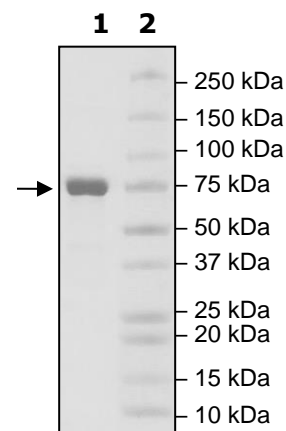
**4-20% SDS-PAGE**  
**Coomassie staining**

**Lane 1:**  
 3CL protease

**Lane 2:**  
 Protein Marker

**MW:** 77.5 kDa

**Purity:** ≥90%



OUR PRODUCTS ARE FOR RESEARCH USE ONLY. NOT FOR DIAGNOSTIC OR THERAPEUTIC USE.

To place your order, please contact us by Phone **1.858.202.1401** Fax **1.858.481.8694**

Or you can Email us at: [info@bpsbioscience.com](mailto:info@bpsbioscience.com)

Please visit our website at: [www.bpsbioscience.com](http://www.bpsbioscience.com)