

Data Sheet

ACE2, His-Avi-Tag, Biotin-labeled

Human, Recombinant, C-terminal His-Avi-tag,
Biotin-labeled

Catalog #: 100665

Lot #: 200326

Conc: 0.64 mg/ml

Formulated in: 40 mM Tris pH 8.0, 110 mM NaCl, 2.2 mM KCl, 200 mM Imidazole and 20% glycerol.

Stability: At least 6 months at -80°C. Avoid freeze/thaw cycles.

References:

1. Oudit, G.Y., *et al.*, *Trends in Cardio. Med.* 2003 Apr;**13(3)**:93-101.
2. Donoghue, M., *et al.*, *Circulation Research.* 2002 Sep;**87**:e1-e9

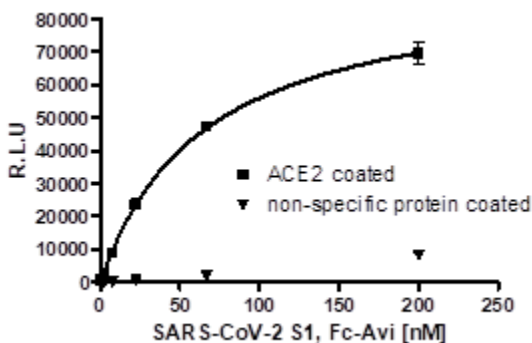
Description: Human Angiotensin converting enzyme 2 (ACE2) also known ACEH, GenBank Accession No. NM_021804.3, a.a. 18-740, with a C-terminal His-tag, expressed in a HEK293 expression system and enzymatically biotinylated using Avi-tag™ technology. Biotinylation is confirmed to be ≥90%. MW=86 kDa. This protein runs at a higher MW by SDS-PAGE due to glycosylation.

Assay Conditions: SARS-CoV-2 S1 and ACE2 binding assay was done using the ACE2:SARS-CoV-2 Spike Inhibitor Screening Assay Kit (BPS Bioscience, #79936). SARS-CoV-2 S1 protein and anti-human Fc-HRP were used instead of SARS-CoV-2 Spike protein (RBD) and anti-mouse Fc-HRP respectively. Non-specific His-tag protein was coated and used for a negative control.

Applications: As an exopeptidase, ACE2 is useful for the study of enzyme kinetics and to screen for inhibitors. As a cell receptor for coronaviruses infection, including 2019-nCoV, ACE2 is useful for the study of protein-protein interactions.

Quality Assurance

SARS-CoV-2 S1 and ACE2[B] Binding

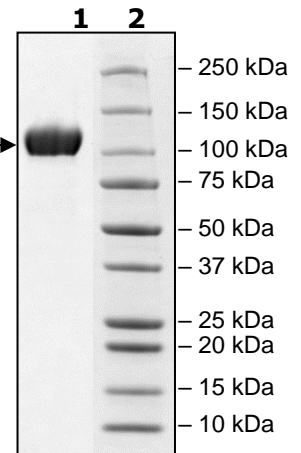


**4-20% SDS-PAGE
Coomassie staining**

Lane 1:
3µg ACE2
Lane 2:
Protein Marker

MW: 86 kDa + glycans

Purity: ≥90%



OUR PRODUCTS ARE FOR RESEARCH USE ONLY. NOT FOR DIAGNOSTIC OR THERAPEUTIC USE.

To place your order, please contact us by Phone 1.858.202.1401 Fax 1.858.481.8694

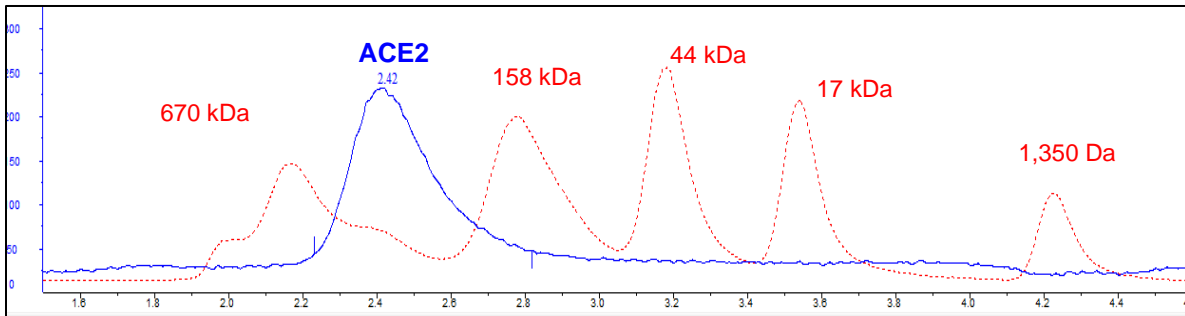
Or you can Email us at: info@bpsbioscience.com

Please visit our website at: www.bpsbioscience.com



6042 Cornerstone Court West, Suite B
San Diego, CA 92121
Tel: 1.858.202.1401
Fax: 1.858.481.8694
Email: info@bpsbioscience.com

Gel Filtration Curve:



<10% Aggregation

OUR PRODUCTS ARE FOR RESEARCH USE ONLY. NOT FOR DIAGNOSTIC OR THERAPEUTIC USE.

To place your order, please contact us by Phone **1.858.202.1401** Fax **1.858.481.8694**
Or you can Email us at: info@bpsbioscience.com
Please visit our website at: www.bpsbioscience.com