

## Data Sheet

### SHP-2

Human, recombinant, N-terminal GST-tag  
 Catalog #: 30022  
 Lot #: 130807A      Conc.: 0.73 mg/ml

**Formulated in:** 25 mM Tris pH 8, 150 mM NaCl, 0.05% Tween-20%, 2 mM EDTA, 1 mM DTT, 50% glycerol, and 10 mM Glutathione.

**Stability:** >6 months at -80°C

#### References:

1. B.G. Neel *et al.* *Trends Biochem. Sci.* (2003) **28**: 284
2. J.V. Ravetch & L.L. Lanier *Science* (2000) **290**: 84
3. S. Yamazaki *et al.* *J. Infect. Dis.* (2003) **187**: 33

**Description:** Human recombinant SHP-2, also known as PTPN11 (protein tyrosine phosphatase N11), catalytic domain, (a.a. 224-529) with N-terminal GST-tag, MW=62 kDa, expressed in an *E. coli* expression system.

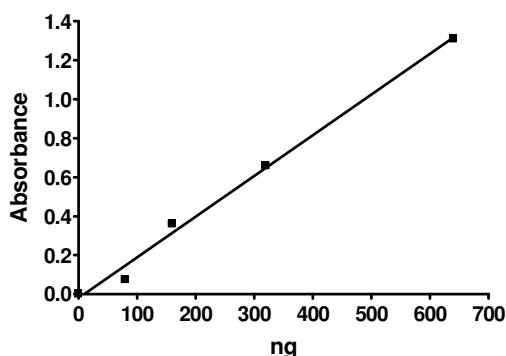
**Specific Activity:** 10 U/μg. One unit will hydrolyze 1 nmol p-nitrophenyl phosphate per minute at pH 7.4 and 30°C.

Assay conditions: 50 mM HEPES, pH 7.4, 2 mM EDTA, 3 mM DTT, 100 mM NaCl, 50 mM pNPP substrate. Incubate for 20 minutes at 30°C. Absorbance is measured at 405 nM.

**Application:** Useful for the study of enzyme kinetics, screening inhibitors, and selectivity profiling.

### Quality Assurance

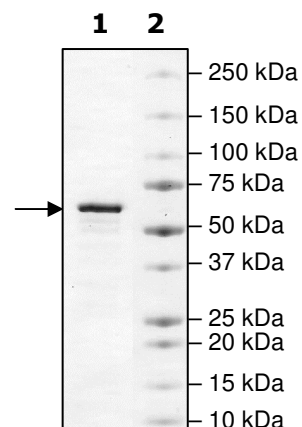
#### Specific Activity



#### 4-20% SDS-PAGE Coomassie staining

**Lane 1:**  
2 μg SHP-2  
**Lane 2:**  
Protein Marker

**MW:** 62 kDa  
**Purity:** ≥90%



OUR PRODUCTS ARE FOR RESEARCH USE ONLY. NOT FOR DIAGNOSTIC OR THERAPEUTIC USE.

To place your order, please contact us by Phone **1.858.829.3082** Fax **1.858.481.8694**  
 Or you can Email us at: [info@bpsbioscience.com](mailto:info@bpsbioscience.com)  
 Please visit our website at: [www.bpsbioscience.com](http://www.bpsbioscience.com)



6044 Cornerstone Court West, Suite E  
San Diego, CA 92121  
Tel: 1.858.829.3082  
Fax: 1.858.481.8694  
Email: [info@bpsbioscience.com](mailto:info@bpsbioscience.com)

**Protein Sequence:**

MSPILGYWKIKGLVQPTRLLEYLEEKYEEHLYERDEGDKWRNKKFELGLEFPNLPYYID  
GDVKLTQSMAIIRYIADKHNMLGGCPKERAEISMLEGAVLDIRYGVSRIAYSKDFETLKVDF  
LSKLPEMLKMFEDRLCHKTYLNGDHVTHPDFMLYDALDVVLYMDPMCLDAFPKLVCFKK  
RIEAI PQIDKYLKSSKYIAWPLQGWQATFGGGDHPPKSDLVPRGSASAEIESRVRELSKL  
AETTDKVKQGFWEETFELQQQECKLLYSRKEGQRQENKNKNRYKNILPFDHTRVVLHD  
GDPNEPVSDYINANIIMPEFETKCNSKPKKSYIATQGCLQNTVNDFWRMVFGENS RVIV  
MTTKEVERGKSKCVKYWPDEYALKEYGVMRVRNVKESAAHDYTLRELKLSKVGQGNT  
ERTVWQYHFRTWPDHGVPSDPGGVLD FLEEVHHKQESIMDAGP VVVHCSAGIGRTGTF  
IVIDILIDIIREKGVDCDIDVPKTIQMVR SQRS GMVQTEAQYRFIYMAVQHYIETLQRRILE

OUR PRODUCTS ARE FOR RESEARCH USE ONLY. NOT FOR DIAGNOSTIC OR THERAPEUTIC USE.

To place your order, please contact us by Phone **1.858.829.3082** Fax **1.858.481.8694**  
Or you can Email us at: [info@bpsbioscience.com](mailto:info@bpsbioscience.com)  
Please visit our website at: [www.bpsbioscience.com](http://www.bpsbioscience.com)