

## Data Sheet

### PRL1

Human, recombinant, N-terminal HIS tag

Catalog #: 30000

Lot#: 90610                      Conc.: 3 mg/ml

**Formulated in:** 40 mM Tris-HCl, pH 8.0, 110 mM NaCl, 2.2mM KCl, 200 mM imidazole, 20% glycerol, and 3 mM DTT.

**Stability:** >6 months at -80°C

#### **References:**

1. Luo Y. *et al.*, *Biochemistry* .2009 Mar 3;**48(8)**:1838-46.
2. Sun J.P. *et al.*, *J Biol Chem.* 2007 Sep 28;**282(39)**:29043-51.

#### **Description:**

Human PRL 1 (GenBank Accession No. BC023975), (a-a 2-173) with N-terminal His-tag, MW = 19.8 kDa, expressed in an *E. coli* expression system.

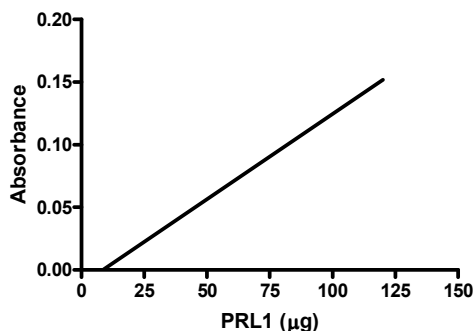
**Specific Activity:** 0.168 pmol/min/μg, Assay conditions: enzyme was incubated in 50 mM Tris pH7.4, 150 mM NaCl, 5 mM DTT, and 12.5 mM PNPP as a substrate for 2h at 37°C. Absorbance was read by Tecan spectrophotometer at 405 nm wavelength.

#### **Application:**

Useful for the study of enzyme kinetics, screening inhibitors, and selectivity profiling.

## Quality Assurance

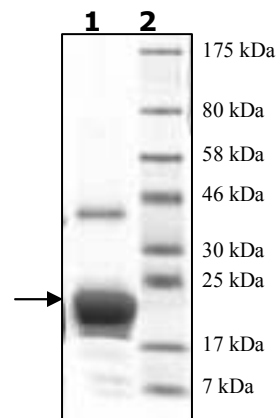
### PRL1 Specific Activity



### 4-20% SDS-PAGE Coomassie staining

**Lane 1:**  
5 μg PRL1  
**Lane 2:**  
Protein Marker  
BioLabs (#P7708L)

**MW:** 19.8 kDa  
**Purity:** >75%



OUR PRODUCTS ARE FOR RESEARCH USE ONLY. NOT FOR DIAGNOSTIC OR THERAPEUTIC USE.

To place your order, please contact us by Phone **1.858.829.3082** Fax **1.858.481.8694**

Or you can Email us at: [info@bpsbioscience.com](mailto:info@bpsbioscience.com)

Please visit our website at: [www.bpsbioscience.com](http://www.bpsbioscience.com)