

Data Sheet

MMP9 (Q279R)

Human, recombinant, C-terminal His-tag

Catalog #: 80215

Lot #: 130730 Conc.: 1.26 mg/ml

Formulated in: 40 mM Tris-HCl, pH 8.0, 110 mM NaCl, 2.2 mM KCl, 200 mM imidazole, and 20% glycerol.

Stability: >6 months at -80°C . Avoid freeze/thaw cycles.

References:

1. Wenham, R.M., *et al.*, *J. Soc. Gynecol. Investig.* 2003 Sep;**10(6)**:381-7.
2. Li, X., *et al.*, *J. Cancer Res. Clin. Oncol.* 2013 Sep;**139(9)**:1433-47.

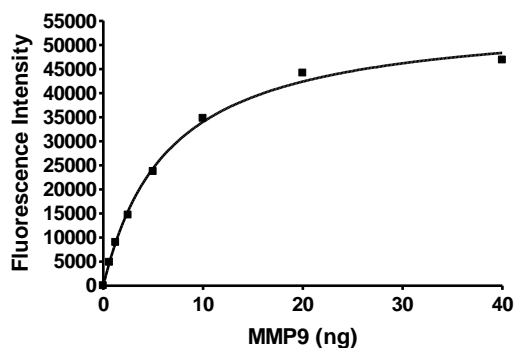
Description: Human matrix metallopeptidase-9 (MMP9), also known as gelatinase B, MANDP2, CLG4B, Macrophage gelatinase, GELB and EC 3.4.24, with Gln to Arg mutation on a.a. 279, GenBank Accession No. NM_004994), a.a. 20-707 (end) with C-terminal His-tag, MW=77.8 kDa, expressed in an HEK293 cell expression system.

Specific Activity: 2500 pmole/min/ μg
Activation: This is a proform enzyme and requires activation prior to testing activity. Dilute the enzyme to 100 ng/ μl in a solution containing 50 mM HEPES, pH 7.4, 10 mM CaCl_2 , 0.05% Brij-35, and 1 mM APMA (amino-phenyl mercuric acetate). Incubate at 37°C for 2 hours. Assay conditions: Reaction mixture with 10 μM 390 MMP substrate 1 (Anaspec). Incubate for 30 minutes at room temperature. Fluorescence intensity is measured at exc328/em393.

Application: Useful for the study of enzyme kinetics, screening inhibitors, and selectivity profiling.

Quality Assurance

Specific Activity

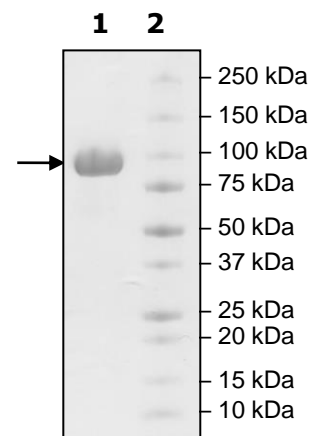


4-20% SDS-PAGE Coomassie staining

Lane 1:
6.3 μg MMP9

Lane 2:
Protein Marker

MW: 77.8 kDa
Purity: $\geq 90\%$



OUR PRODUCTS ARE FOR RESEARCH USE ONLY. NOT FOR DIAGNOSTIC OR THERAPEUTIC USE.

To place your order, please contact us by Phone 1.858.202.1401 Fax 1.858.481.8694

Or you can Email us at: support@bpsbioscience.com

Please visit our website at: www.bpsbioscience.com



6045 Mira Mesa Blvd, Suite 100
San Diego, CA 92121
Tel: 1.858.202.1401
Fax: 1.858.481.8694
Email: support@bpsbioscience.com

Sequence:

APRQRQSTLVLFPGDLRTNLTDRQLAEEYLYRYGYTRVAEMRGESKSLGPALLLLQK
QLSLPETGELDSATLKAMRTPRCGVPLGRFQTFEGDLKWHHHNITYWIQNYSEDLP
RAVIDDAFARAFALWSAVTPLTFTRVYSRDADIVIQFGVAEHGDGYPFDGKDGLLAHA
FPPGPGIQGDAHFDDELWSLGGVVPTRFGNADGAACHFPFIFEGRSYSACTTDG
RSDGLPWCSTTANYDTDDRFGFCPSERLYT**R**DGNADGKPCQFPFIFQGQSYSACTTD
GRSDGYRWCATTANYDRDKLFGFCPTRADSTVMGGNSAGELCVFPFTFLGKEYSTC
TSEGRGDGRLWCATTSNFSDKKWGFCDQGYSLFLVAAHEFGHALGLDHSSVPEA
LMYPMYRFTEGPPLHKDDVNGIRHLYGPRPEPEPRPPTTTTPQPTAPPTVCPTGPPTV
HPSERPTAGPTGPPSAGPTGPPTAGPSTATTVPLSPVDDACNVNIFDAIAEIGNQLYLF
KDGKYWRFSEGRGSRPQGPFLLIADKWPALPRKLDVFEERLSKLLFFFSGRQVWVY
TGASVLGPRRLDKLGLGADVAQVTGALRSGRGKMLLFSGRRLWRFDVKAQMVDPR
SASEVDRMFPGVPLDTHDVFQYREKAYFCQDRFYWRVSSRSELNQVDQVGYVTYDIL
QCPED**HHHHHHHHHH**

OUR PRODUCTS ARE FOR RESEARCH USE ONLY. NOT FOR DIAGNOSTIC OR THERAPEUTIC USE.
To place your order, please contact us by Phone **1.858.202.1401** Fax **1.858.481.8694**
Or you can Email us at: support@bpsbioscience.com
Please visit our website at: www.bpsbioscience.com