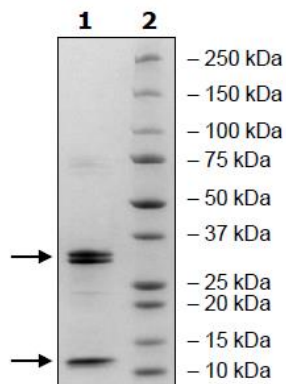


## Product Information

<b>Construct:</b>	Caspase9 (1-416(end)-His)
<b>Concentration:</b>	0.42 mg/ml
<b>Species:</b>	Human
<b>Formulated In:</b>	40 mM Tris-HCl pH 8.0, 110 mM NaCl, 2.2 mM KCl, 20% glycerol, 3 mM DTT, 65 mM imidazole
<b>Expression System:</b>	<i>E.coli</i>
<b>Format:</b>	Aqueous buffer solution
<b>Stability:</b>	At least 6 months at -80°C. Avoid freeze/thaw cycles.
<b>Storage:</b>	-80°C
<b>Genbank Accession:</b>	NM_001229
<b>MW:</b>	45 kDa
<b>Purity:</b>	≥90%
<b>Specific Activity:</b>	0.11 pmol/min/μg
<b>Assay Conditions:</b>	50 mM HEPES, pH 7.2, 50 mM NaCl, 10 mM EDTA, 0.1% Chaps, 5% glycerol, 10 mM DTT, and 10 μM Caspase 9 substrate. Incubate for 2 hours at room temperature. Fluorescence intensity is measured at exc380/em505 nm.
<b>Applications:</b>	Useful for the study of enzyme kinetics, screening inhibitors, and selectivity profiling.
<b>Notes:</b>	Procaspase-9 is autocleaved between the prodomain and large protease subunit (p35). The cleavage product contains both the large (p35) and small (p10 [His-tag]) protease subunits.

## Quality Control Data

## 4-20% SDS-Page Coomassie Staining



## Specific Activity

