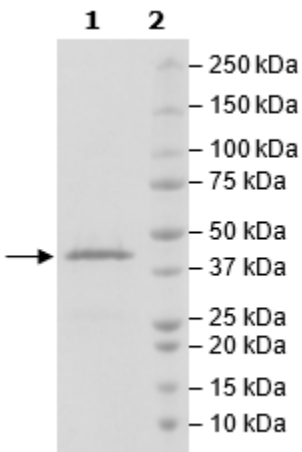


Product Information

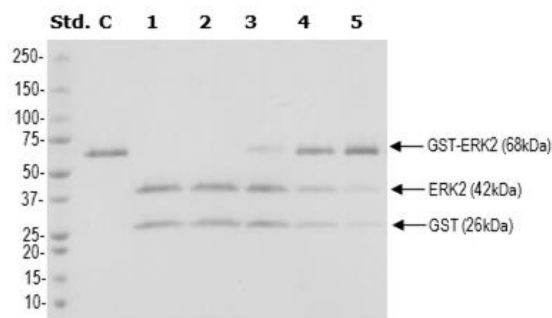
Construct:	HRV 3C Protease (His-GST-1538-1717)
Concentration:	1.90 mg/ml
Species:	Human
Formulated In:	50 mM Tris-HCl, pH 8.0, 150 mM NaCl, 1 mM EDTA, 1 mM TCEP, 50% glycerol
Expression System:	<i>E. coli</i>
Format:	Aqueous buffer solution
Stability:	At least 6 months at -80°C. Avoid freeze/thaw cycles.
Storage:	-80°C
MW:	47 kDa
Purity:	≥90%
Specific Activity:	1 unit of HRV 3C protease cleaves >95% of 100ug of target protein at 4°C for 16 hours.
Assay Conditions:	A 68 kDa GST-fusion protein (C) at a ratio of (1) 1:100, (2) 1:200, (3) 1:400, (4) 1:800 (w/w) in a buffer of 25 mM Tris-HCl, pH8.0, 150 mM NaCl, 14 mM β-mercaptoethanol at 4°C for 16 hours. The cleaved products are 42 kDa and 26 kDa.
Applications:	Useful for the study of enzyme kinetics, screening inhibitors, and selectivity profiling.

Quality Control Data

4-20% SDS-Page Coomassie Staining



Activity



Lane C: GST-ERK2

Lanes 1-5: HRV 3C Protease: GST-ERK2

(Lane 1) 1:100

(Lane 2) 1:200

(Lane 3) 1:400

(Lane 4) 1:800

(Lane 5) 1:1600