

## Data Sheet

### CLPP, His-Tag

Human, Recombinant, N-terminal His-tag

**Catalog #:** 100764

**Lot #:** 200811-3      **Conc.:** 1.67 mg/ml

**Description:** Human Caseinolytic Mitochondrial Matrix Peptidase Proteolytic Subunit (CLPP), also known as DFNB81 and PRLTS3, GenBank Accession No. NM\_006012.4, a.a. 57-277(end), with N-terminal His-tag, expressed in an *E.coli* cell expression system. MW=25 kDa

**Formulated in:** 40 mM Tris-HCl, pH 8.0, 138 mM NaCl, 2.7 mM KCl, 0.04% Tween-20, 20% glycerol, 3 mM DTT, 200 mM Imidazole.

**Stability:** At least 6 months at  $-80^{\circ}\text{C}$ .  
Avoid freeze/thaw cycles.

#### References:

1. Wang, J. *et al.*, *Cell*. 1997 Nov; **91(4)**: 447-457.
2. Gaillot, O. *et al.*, *Molec. Microbio.* 2000 Mar; **35(6)**:1286-1294.

---

## Quality Assurance

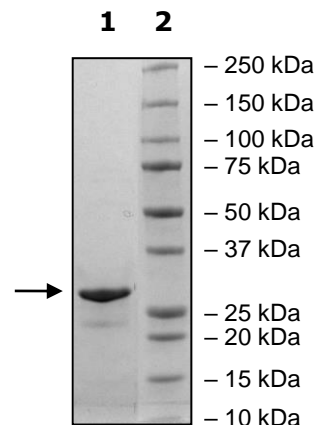
#### 4-20% SDS-PAGE Coomassie staining

**Lane 1:**  
2  $\mu\text{g}$  CLPP

**Lane 2:**  
Protein Marker

**MW:** 25 kDa

**Purity:** >90%



OUR PRODUCTS ARE FOR RESEARCH USE ONLY. NOT FOR DIAGNOSTIC OR THERAPEUTIC USE.

To place your order, please contact us by Phone **1.858.202.1401** Fax **1.858.481.8694**

Or you can Email us at: [info@bpsbioscience.com](mailto:info@bpsbioscience.com)

Please visit our website at: [www.bpsbioscience.com](http://www.bpsbioscience.com)