

Data Sheet

3CL Protease, MBP-tag, His-tag **(MERS-CoV)**

MERS-CoV, Recombinant, N-terminal MBP-tag,
C-terminal His-tag

Catalog #: 100757

Lot #: 200609-3

Conc: 1.86 mg/ml

Formulated in: 40 mM Tris-HCl, pH 8.0, 138 mM NaCl, 2.7 mM KCl, 20% glycerol, variable Imidazole.

Stability: At least 6 months at -80°C. Avoid freeze/thaw cycles.

References:

1. Jo, S. *et al.*, *J. Enzyme Inh. & Med. Chem.* 2019; **1(35)**: 145-151.
2. He, J. *et al.*, *Intl J. Antimicrobial Agents.* 2020; doi.org/10.1016/j.ijantimicag.2020.106055.

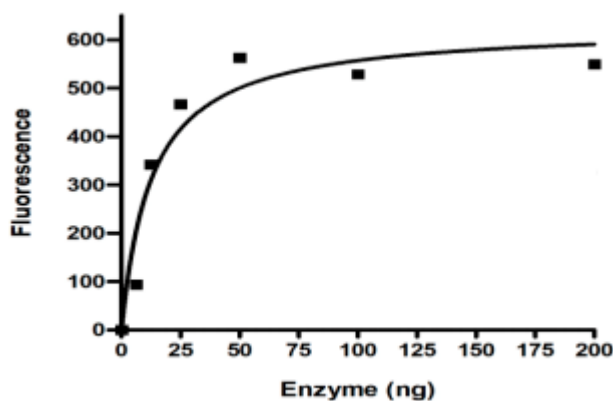
Description: Middle East Respiratory Syndrome Coronavirus 3C-like protease (MERS-CoV 3CL Protease), GenBank Accession No. ATG84821.1, a.a. 1-306(full length), with an N-terminal MBP-tag, and C-terminal His-tag, expressed in an *E. coli* expression system, MW=78 kDa.

Assay Conditions: Add 40 µl of MERS-CoV 3CL protease diluted in 1x assay buffer. Start the reaction by adding 10 µl of diluted substrate. Incubate 4 hours at 37°C. Read fluorescence ($\lambda_{exc}=485$ nm, $\lambda_{em}=528$ nm). Total volume is 50 µl.

Applications: Useful for the study of enzyme kinetics, screening inhibitors, and selectivity profiling.

Quality Assurance

3CL Protease (MERS-CoV) Activity



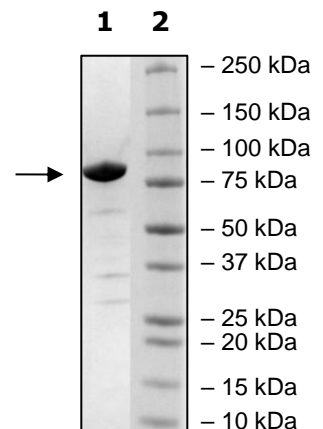
4-20% SDS-PAGE **Coomassie staining**

Lane 1:
2 µg MERS-CoV 3C
Like Protease

Lane 2:
Protein Marker

MW: 78 kDa

Purity: >90%



OUR PRODUCTS ARE FOR RESEARCH USE ONLY. NOT FOR DIAGNOSTIC OR THERAPEUTIC USE.

To place your order, please contact us by Phone **1.858.202.1401** Fax **1.858.481.8694**

Or you can Email us at: info@bpsbioscience.com

Please visit our website at: www.bpsbioscience.com