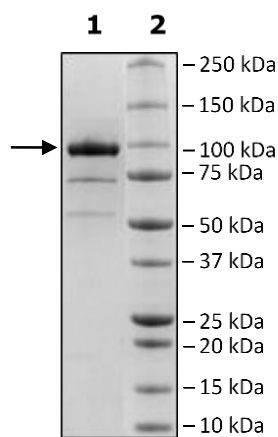


Product Information

Construct:	MALT1 (FLAG-2-825(end))
Concentration:	0.57 mg/ml
Species:	Human
Formulated In:	40 mM Tris-HCl, pH 8.0, 110 mM NaCl, 2.2 mM KCl, 20% glycerol, 100 µg/ml FLAG peptide
Expression System:	HEK293
Format:	Aqueous buffer solution
Stability:	At least 6 months at -80°C. Avoid freeze/thaw cycles.
Storage:	-80°C
Genbank Accession:	NM_006785
MW:	93 kDa
Purity:	87%
Assay Conditions:	Assay was performed using the Fluorogenic MALT1 Assay Kit (BPS Bioscience #79809) with MALT1 titrated from 1200 ng/rxn – 15.625 ng/rxn.
Applications:	Useful for the study of enzyme kinetics, screening inhibitors, and selectivity profiling.

Quality Control Data

4-20% SDS-Page Coomassie Staining



MALT1 Activity

