

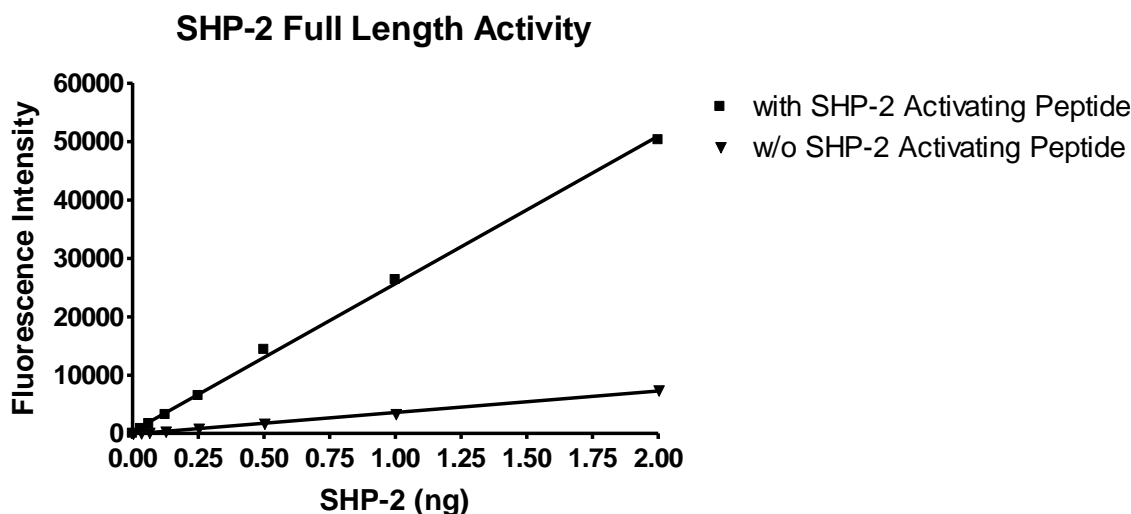
**Data Sheet**  
***SHP-2 Activating Peptide***  
***(IRS1\_pY1172(dPEG8)pY1222)***  
**Catalog # 79319-2**

**Background:** It has been shown that the bisphosphorylated insulin receptor substrate 1 (IRS-1) binds to the (N)-SH2 domain of SHP-2 (PTPN11) resulting in activation of the SHP2 enzymatic activity.

**Description:** IRS1\_pY1172(dPEG8)pY1222(SEQ: H2N-LN(pY)IDLDLV(dPEG8)LST(pY)-ASINFQK-amide)

**Purity:** >95% (by HPLC)

**Size:** 100 µl



*SHP2 activation assay was performed as described in the SHP2(Full length) Assay Kit (BPS cat#79330)*

**Solubility/Stability:** Soluble in DMSO. Store at -80°C.

**Reference:** Chen Y-N et. al., *Nature*, 535(7610):148-152 (2016)

OUR PRODUCTS ARE FOR RESEARCH USE ONLY. NOT FOR DIAGNOSTIC OR THERAPEUTIC USE.

To place your order, please contact us by Phone **1.858.202.1401** Fax **1.858.481.8694**

Or you can Email us at: [info@bpsbioscience.com](mailto:info@bpsbioscience.com)

Please visit our website at: [www.bpsbioscience.com](http://www.bpsbioscience.com)



6042 Cornerstone Court W, Ste B  
San Diego, CA 92121  
**Tel:** 1.858.202.1401  
**Fax:** 1.858.481.8694  
**Email:** [info@bpsbioscience.com](mailto:info@bpsbioscience.com)

**RELATED PRODUCTS:**

<u>Product Name</u>	<u>Catalog #</u>	<u>Size</u>
SHP-2 (PTPN11), GST-tag	30022	20 µg
SHP-1(PTPN6), GST-tag	30021	20 µg
Insulin receptor (INSR), GST-tag	40241	10 µg
Homogeneous SHP-2 Assay Kit	79330	96 rxns

OUR PRODUCTS ARE FOR RESEARCH USE ONLY. NOT FOR DIAGNOSTIC OR THERAPEUTIC USE.

To place your order, please contact us by Phone **1.858.202.1401** Fax **1.858.481.8694**

Or you can Email us at: [info@bpsbioscience.com](mailto:info@bpsbioscience.com)

Please visit our website at: [www.bpsbioscience.com](http://www.bpsbioscience.com)