

Data Sheet

LSD1 (KDM1A, AOF2)

Human, recombinant

Catalog #: 50097

Lot#: 160323-C **Conc.:** 0.19 mg/ml

Formulated in: 100mM
Na₂HPO₄/NaH₂PO₄, pH 7.4

Stability: At least 6 months at -80°C.
Avoid freeze/thaw cycles.

References:

1. Lan, F. *et al.*, *Nature* **448** (7154), 718-722 (2007)
2. Forneris, F. *et al.*, *J. Biol. Chem.* **282** (28), 20070-20074 (2007)

Description: Human LSD1, also known as KDM1A (lysine (K)-specific demethylase 1A) or AOF2, amine oxidase (flavin containing domain 2), GenBank Accession No. NM_015013, a.a. 158-end, expressed in *E. coli* expression system. MW=78 kDa.

Specific Activity: 20.6 pmol/min/μg
Assay conditions: Assay was performed according to BPS catalog #50109 with LSD1 titrated from 400 ng/rxn – 0 ng/rxn.

Application: Useful for the study of enzyme kinetics, screening inhibitors, and selectivity profiling.

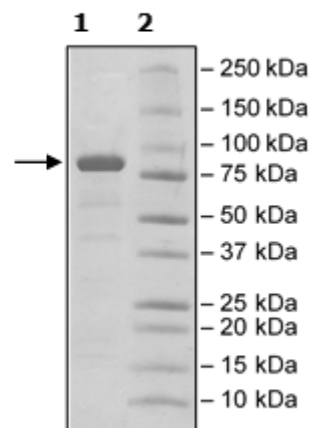
Quality Assurance

Specific Activity

4-20% SDS-PAGE
Coomassie staining

Lane 1:
2 μg LSD1
Lane 2:
Protein Marker

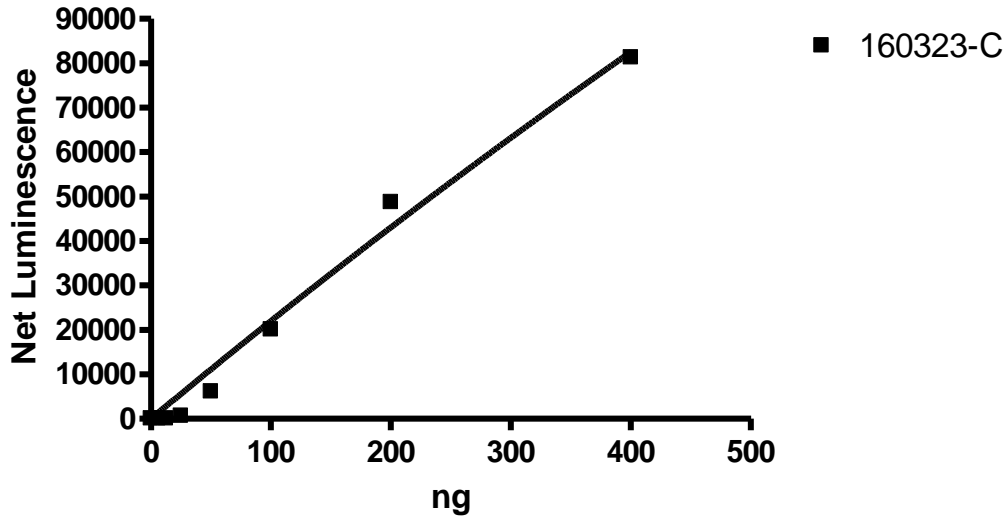
MW: 78 kDa
Purity: 90%





6042 Cornerstone Court West, Suite B
San Diego, CA 92121
Tel: 1.858.202.1401
Fax: 1.858.481.8694
Email: info@bpsbioscience.com

LSD1 (KDM1A), Variant 2



OUR PRODUCTS ARE FOR RESEARCH USE ONLY. NOT FOR DIAGNOSTIC OR THERAPEUTIC USE.
To place your order, please contact us by Phone **1.858.202.1401** Fax **1.858.481.8694**
Or you can Email us at: info@bpsbioscience.com
Please visit our website at: www.bpsbioscience.com