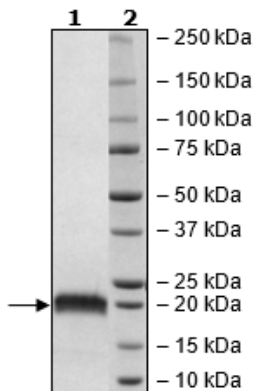


Product Information

<b>Construct:</b>	PRL2 (His-2-167)
<b>Concentration:</b>	1.33 mg/ml
<b>Species:</b>	Human
<b>Formulated In:</b>	40 mM Tris-HCl pH 8.0, 110 mM NaCl, 2.2 mM KCl, 20% glycerol, 3 mM DTT
<b>Expression System:</b>	<i>E. coli</i>
<b>Format:</b>	Aqueous buffer solution
<b>Stability:</b>	At least 6 months at -80°C. Avoid freeze/thaw cycles.
<b>Storage:</b>	-80°C
<b>Genbank Accession:</b>	NM_080391
<b>MW:</b>	19 kDa
<b>Purity:</b>	≥90%
<b>Assay Conditions:</b>	Assay was done in a 50 µl reaction with 50 mM MOPS, pH 7.0, 3 mM DTT, 10 µM DiFMUP, and various amounts of PRL2 for 30 min incubation at room temperature.
<b>Applications:</b>	Useful for the study of enzyme kinetics, screening inhibitors, and selectivity profiling.

Quality Control Data

4-20% SDS-Page Coomassie Staining



PRL2 Activity

